

# East/West Circulation Alternatives Land Use and Community Design Analysis

Kingston Terrace Master Plan  
King City, Oregon

**Prepared For:**

3J Consulting and King City, Oregon

**Prepared By:**

SCJ Alliance

Laura Barker, Planner

8730 Tallon Lane NE, Suite 200

Lacey, WA 98516

360.352.1465

June 2022



# East/West Circulation Alternatives

## Land Use and Community Design Analysis

### **Project Information**

Project: Kingston Terrace Master Plan

Prepared for: 3J Consulting  
9600 Nimbus Avenue, #100  
Beaverton, OR 97008

### **Reviewing Agency**

Jurisdiction: King City, Oregon

### **Project Representative**

Prepared by: SCJ Alliance  
8730 Tallon Lane NE, Suite 200  
Lacey, WA 98516  
360.352.1465  
scjalliance.com

Contact: Anne Sylvester, PTE, Senior Consultant

Project Reference: SCJ #1902.02

## Table of Contents

<b>1</b>	<b>INTRODUCTION .....</b>	<b>1</b>
1.1	Purpose of this Report.....	1
1.2	Study Area .....	1
1.3	How the Information in This Report will be Used .....	1
1.4	Report Content and Organization .....	1
<b>2</b>	<b>REGULATORY FRAMEWORK AND EVALUATION FACTORS.....</b>	<b>3</b>
2.1	Social and Environmental Justice Regulatory Framework .....	3
2.2	Evaluation Factors for Social and Environmental Justice.....	4
<b>3</b>	<b>EXISTING STUDY AREA CONDITIONS .....</b>	<b>5</b>
3.1	Existing Land Use.....	5
3.2	Study Area Demographics .....	5
<b>4</b>	<b>FUTURE LAND USE PLANS .....</b>	<b>8</b>
4.1	Concept Plan – King City Urban Reserve Area 6D .....	8
<b>5</b>	<b>ANALYSIS OF SOCIAL AND ENVIRONMENTAL JUSTICE EFFECTS .....</b>	<b>10</b>
5.1	East/West Circulation Alternatives .....	10
5.2	Summary of Evaluation Process .....	10
5.3	Evaluation of Land Use and Community Design Factors.....	12
<b>6</b>	<b>SUMMARY OF CONCLUSIONS .....</b>	<b>17</b>

## List of Attachments

Attachment A EJScreen Demographics Reports

## List of Tables

Table 1. Minority Population in the Study Area.....	6
Table 2. Low-Income Households in the Study Area .....	6
Table 3. LEP Population in the Study Area .....	7
Table 4. Support of Planned Land Use Patterns .....	13
Table 5. Support of Existing and New Neighborhood Cohesion .....	13
Table 6. Low-Income Households within ¼ Mile of Each Alternative.....	14

Table 7. Serves Those with Greatest Transportation Needs and Least Resources..... 14

Table 8. Minority Populations within ¼ Mile of Each Alternative..... 15

Table 9. LEP Populations within ¼ Mile of Each Alternative..... 15

Table 10. Impacts to Disadvantaged or Marginalized Population Groups ..... 16

Table 11. Comparative Ranking of Land Use and Community Design Factors ..... 17

Table 12. Summary of Key Findings from Evaluation of Land Use and Community Design Factors .. 18

## List of Figures

Figure 1. Kingston Terrace Study Area and Vicinity..... 2

Figure 2. Concept Plan Land Use Framework ..... 9

Figure 3. East/West Circulation Alternatives ..... 11

# 1 INTRODUCTION

## 1.1 Purpose of this Report

This report has been prepared to document many of the factors identified for evaluation in the broad land use and community design category. Included in the report is an assessment of how well the east/west circulation alternatives:

- Support planned land use patterns
- Affect existing and new neighborhood cohesion
- Serve those with the greatest transportation needs and the least resources
- Benefit or impact disadvantaged or marginalized populations (i.e., social and environmental justice (EJ) populations and resources in the study area)

The analysis presented in this report includes an overview of the study area's existing conditions and an assessment of the social and EJ implications of a range of alternatives.

## 1.2 Study Area

The study area for evaluating land use and community design impacts is primarily focused on the area north of the Tualatin River, south of Beef Bend Road, east of Roy Rogers Road, and west of the existing city limits and the BPA/PGE utility corridor. The location of the Kingston Terrace Master Plan (KTMP) study area is illustrated in **Figure 1**, along with the existing boundaries of King City.

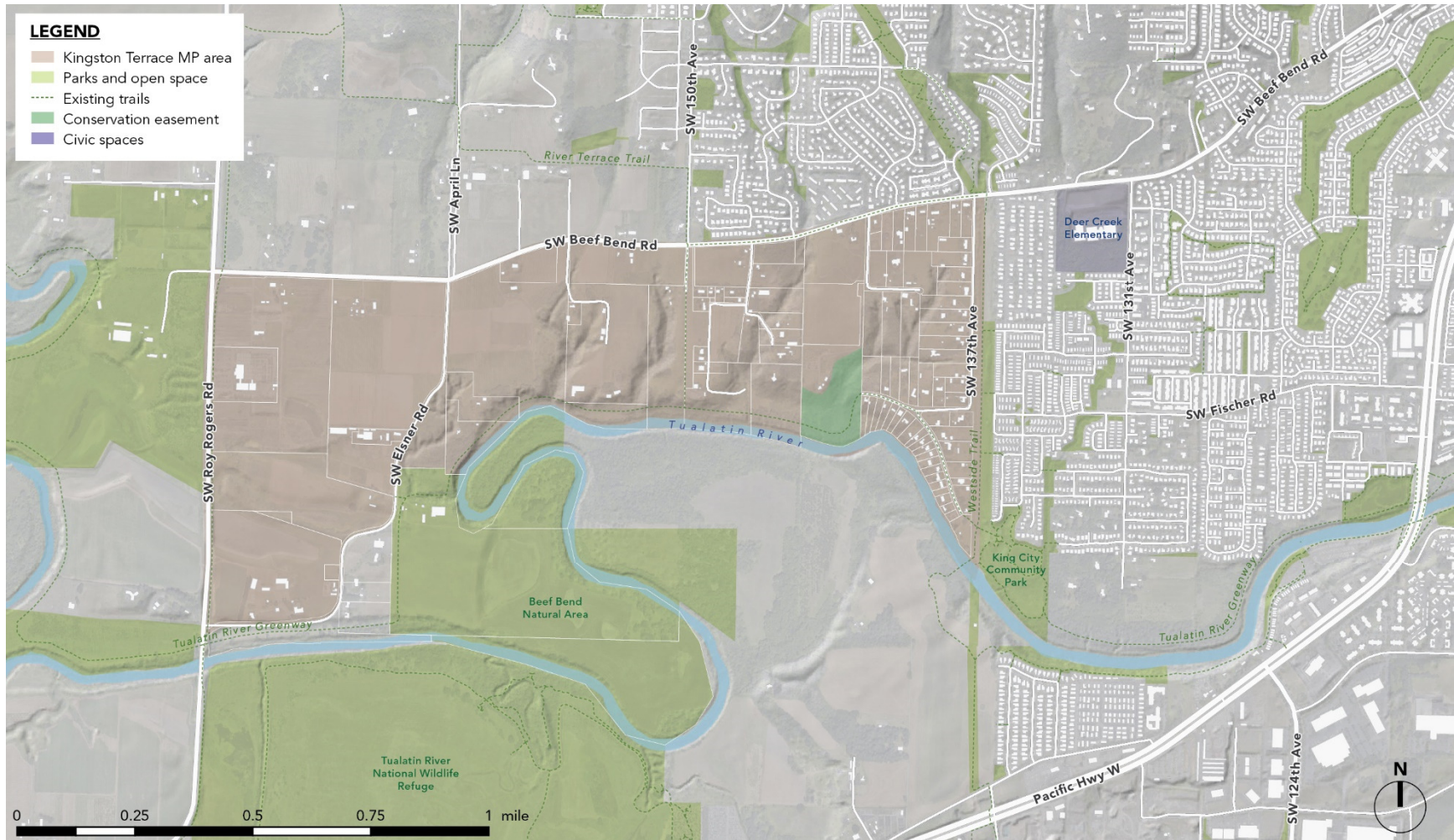
## 1.3 How the Information in This Report will be Used

The information presented in this report will be used to support the multi-disciplinary evaluation of east/west circulation alternatives using factors that are described in Chapter 2. Ultimately, the results of the analysis covered in this report will be compiled into an Alternatives Analysis report which will inform further discussion on transportation options for the Master Plan. This information will be further considered as the Kingston Terrace master planning process continues, ultimately leading to identification of a preferred course of action.

## 1.4 Report Content and Organization

This report is organized into six chapters. Following this introduction, Chapter 2 discusses the regulatory framework used in particular for evaluating social and environmental justice evaluation factors. Chapter 3 reports on existing conditions in the study area, including existing land uses, and demographics and EJ populations. Chapter 4 summarizes the future land use plans for the study area. Chapter 5 presents the social and environmental justice evaluation for the Kingston Terrace east/west circulation alternatives, and Chapter 6 summarizes the evaluation results.

Figure 1. Kingston Terrace Study Area and Vicinity



## 2 REGULATORY FRAMEWORK AND EVALUATION FACTORS

### 2.1 Social and Environmental Justice Regulatory Framework

The EPA defines environmental justice as “the fair treatment and meaningful involvement of all people regardless of race, color, national origin or income with respect to development, implementation, and enforcement of environmental laws, regulations, and policies.”<sup>1</sup> While there is no specific regulatory requirement for social and environmental justice analysis at a local level, federal and state laws lay out a framework to guide the implementation of relevant regulations.

#### 2.1.1 Federal Framework

In response to mounting evidence that communities of color and low-income communities faced a disproportionate share of adverse environmental consequences, Executive Order 12898: Federal Actions to Address Environmental Justice in Minority Populations and Low-Income Populations, was signed in 1994. The Order was created to ensure that “all communities and persons across this Nation live in a safe and healthful environment.”<sup>2</sup> Among other initiatives, this Order directs each federal agency to develop a strategy to ensure its actions do not have “disproportionally high and adverse human health or environmental effects” on low-income and minority populations.

The Order lays out the framework for integrating environmental justice considerations within Federal actions by requiring agencies to do the following:

- ◆ Analyze environmental effects, including human health and socioeconomic impacts of Federal actions on minority and low-income communities
- ◆ Provide opportunities for early and continuous input by communities potentially affected by action, including opportunity to review and discuss environmental and/or health impacts, alternatives and mitigation measures

Further, the Order explicitly incorporates environmental justice considerations into Federal agency compliance with Title VI of the Civil Rights Act of 1964. Title VI provides that “no person in the United States shall, on the ground of race, color, or national origin, be excluded from participation in, be denied the benefits of, or be subjected to discrimination under any program or activity receiving Federal financial assistance.”<sup>3</sup>

#### 2.1.2 State Framework

Awareness of social and environmental injustice has grown in recent decades, and Oregon has responded in a number of ways. In 1993, The Oregon Environmental Equity Citizen Advisory Committee was formed to assist Department of Environmental Quality (DEQ) and Oregon Health Division to investigate how the State’s environmental programs may contribute to environmental discrimination; DEQ made a series of recommendations for immediate action to incorporate equity considerations into agency programs in 1994.

---

<sup>1</sup> <https://www.epa.gov/environmentaljustice>

<sup>2</sup> <https://www.archives.gov/files/federal-register/executive-orders/pdf/12898.pdf>

<sup>3</sup> 42 U.S.C. § 2000(d) (1964)

In 1997, The Governor’s Environmental Justice Advisory Board (GEJAB) was created to determine how the state’s natural resource agencies could better implement the 1994 recommendations. And in 2007, Oregon’s Environmental Justice Task Force was established to advise the Governor and state natural resource agencies on environmental justice concerns. The Task Force meets with EJ communities across the state, reports directly to the Governor about environmental justice concerns those communities are facing, and works with agencies to address those concerns while meeting EJ goals. The law also requires state natural resources agencies to address EJ issues as part of standard operations.

### 2.1.3 Social and Environmental Justice Guidance

Although, as previously mentioned, there are no specific local regulatory requirements related to social and environmental justice, guidance can be found from both federal and state agencies. The State of Oregon Environmental Justice Task Force produced a handbook titled “Environmental Justice: Best Practices for Oregon’s Natural Resource Agencies” that offers guidance, tools, and approaches for identifying potential environmental justice issues<sup>4</sup>. This report used guidance from the EJ Task Force’s handbook to identify social and environmental justice populations and resources in the study area.

## 2.2 Evaluation Factors for Social and Environmental Justice

These factors address the potential effect of alternatives on various components of social and environmental justice within the community, including land use, recreational, environmental, and cultural impacts. Specific factors include:

- ◆ Impacts to or support of land use patterns as envisioned in the Concept Plan and evolving Kingston Terrace Master Plan (KTMP)
- ◆ Protects existing and new neighborhood cohesion
- ◆ Minimizes adverse impacts and provides circulation benefits to those with the least access to transportation resources and the greatest mobility needs
- ◆ Order of magnitude impact to historically disadvantaged or marginalized populations

The intent of evaluating these factors is to differentiate among alternatives, highlighting the choices and trade-offs that need to be made to arrive at a final decision on a preferred alignment(s). This report specifically addresses an evaluation process based on the land use factors and will largely consider “order of magnitude” effects of each alternative.

---

<sup>4</sup> [https://www.oregon.gov/odot/Business/OCR/Documents/Oregon\\_EJTF\\_Handbook\\_Final.pdf](https://www.oregon.gov/odot/Business/OCR/Documents/Oregon_EJTF_Handbook_Final.pdf)



## 3 EXISTING STUDY AREA CONDITIONS

This chapter describes the existing land use patterns and the social and environmental justice (EJ) resources and populations in the study area. Demographics information is provided for EJ populations in the study area, alongside comparative data for King City and Washington County.

### 3.1 Existing Land Use

The existing incorporated area of King City includes about 460 acres and is situated at the southwestern edge of the Portland metropolitan area. The KTMP study area is directly adjacent to and west of the existing King City limits, along the northern bank of the Tualatin River.

Current land use in the study area is dominantly agriculture with associated rural homesteads, and also includes a small number of single-family residential developments unassociated with farming on the eastern edge of the study area, just outside the existing city limits. Areas of moderately dense single-family and multifamily residential development are located just outside and adjacent to the study area: to the east, across 137<sup>th</sup> Avenue, and to the north, across Beef Bend Road between 137<sup>th</sup> and 150<sup>th</sup> Avenues.

The existing study area and its surrounding context are shown in **Figure 1**.

### 3.2 Study Area Demographics

This section examines the demographics data for three EJ populations within the study area: minority populations, low-income households, and limited English proficiency (LEP) populations. Census data for the EJ populations within the study area was gathered from EPA's Environmental Justice Screening and Mapping Tool (EJScreen)<sup>5</sup>. Using official U.S. Census Bureau 2015-2019 American Community Survey (ACS) 5-Year Estimates provided at the block group<sup>6</sup> level, the EJScreen tool distills the census data to reflect only the population within the study area. EJ population data is also provided for King City and Washington County for comparison purposes. EJScreen reports can be found in **Attachment A**.

#### 3.2.1 Minority Population

Minority population data for the study area, King City, and Washington County are provided in **Table 1**.

The study area as defined in Figure 1 currently has a small population of 314, with 31.8% of its population identifying as minority individuals. This is slightly smaller than the percentage of minorities in Washington County (34.3%), but quite a bit larger than that in King City overall (18.4%).

In the breakout of ethnicities shown in Table 1, the percentages in the study area roughly mirror those of King City and Washington County. Of note, the percentage of Black residents in the study area is 6.1%, significantly higher than that of King City (2.9%) or Washington County (1.9%). The percentage of Hispanic or Latino residents is 14.3% which, while slightly lower than that of Washington County (16.7%), is quite a bit higher than that of King City (9.6%).

---

<sup>5</sup> EPA EJScreen Mapping Tool, <https://ejscreen.epa.gov/mapper/>

<sup>6</sup> Block groups are geographic units used for data collection by the U.S. Census Bureau. A block group generally has a population of 600 to 3,000 and is the smallest geographic unit for which the Census Bureau publishes sample data.

**Table 1. Minority Population in the Study Area**

Geography	Kingston Terrace Study Area		King City		Washington County	
	# of People	% of Total	# of People	% of Total	# of People	% of Total
Total population	314	--	3,937	--	589,481	--
White alone	215	68.5%	3,211	81.6%	387,456	65.7%
Black or African American alone	19	6.1%	113	2.9%	11,469	1.9%
American Indian and Alaska Native alone	3	1.0%	17	0.4%	1,539	0.3%
Asian alone	19	6.1%	131	3.3%	62,050	10.5%
Native Hawaiian and Other Pacific Islander alone	0	0.0%	0	0.0%	2,417	0.4%
Some other race alone	0	0.0%	0	0.0%	1,025	0.2%
Two or more races	14	4.5%	87	2.2%	25,324	4.3%
Hispanic or Latino (of any race)	45	14.3%	378	9.6%	98,201	16.7%
<b>Total minority population</b>	<b>100</b>	<b>31.8%</b>	<b>726</b>	<b>18.4%</b>	<b>202,025</b>	<b>34.3%</b>

Note: King City total population in this table reflects values as of the 2015-2019 time period used in analysis presented in this report. Current 2021 population is just under 5,200 residents.

### 3.2.2 Low-Income Households

Data on low-income<sup>7</sup> households in the study area, King City, and Washington County are shown in **Table 2**.

**Table 2. Low-Income Households in the Study Area**

Geography	KT Study Area Households		King City Households		Washington Co. Households	
	# of Households	% of Total	# of Households	% of Total	# of Households	% of Total
Total households	118	--	2,038	--	219,053	--
Less than \$15,000	7	5.9%	310	15.2%	12,775	5.8%
\$15,000-\$25,000	3	2.5%	223	10.9%	12,668	5.8%
\$25,000-\$50,000	7	5.9%	405	19.9%	37,828	17.3%
\$50,000-\$75,000	17	14.4%	405	19.9%	36,464	16.6%
\$75,000 or more	84	71.2%	694	34.1%	119,318	54.5%
<b>Total low-income households (&lt;\$50,000)</b>	<b>17</b>	<b>14.4%</b>	<b>938</b>	<b>46.0%</b>	<b>63,271</b>	<b>28.9%</b>

Low-income households account for 14.4% of all households in the study area. This is well below the percentage of low-income households in King City (46.0%) and Washington County (28.9%). Because

<sup>7</sup> The Oregon Environmental Task Force recommends using 200% of the federal poverty line as a standard best practice for low-income designation. The Office of the Assistant Secretary for Planning and Evaluation (ASPE) website identified the January 11, 2019 poverty guidelines for a four-person household equaling \$25,750 per year; 200% of the poverty line would be \$51,500. Because the Census data provides income information in ranges of \$5,000, this analysis defines a low-income household as one with a household income of less than \$50,000 per year.

King City was originally established as a retirement community, it's not surprising that its share of low-income households would skew well above the regional average, as most retirees live on a fixed income.

### 3.2.3 Limited English Proficiency (LEP) Population

Information on limited English proficiency (LEP)<sup>8</sup> populations in the study area, King City, and Washington County is provided in **Table 3**.

**Table 3. LEP Population in the Study Area**

Geography	KT Study Area Population		King City Population		Washington Co Pop.	
	# of People	% of Total	# of People	% of Total	# of People	% of Total
Total population > 5 years old	279	--	3,316	--	553,510	--
Speak only English	218	78.1%	2,689	81.1%	416,442	75.2%
Speak English "very well"	55	19.7%	536	16.2%	88,241	15.9%
Speak English "well"	4	1.4%	34	1.0%	27,796	5.0%
Speak English "not well"	2	0.7%	56	1.7%	15,932	2.9%
Speak English "not at all"	0	0.0%	0	0.0%	5,099	0.9%
<b>Total population speaking English "less than well" ("not well" + "not at all")</b>	<b>2</b>	<b>0.7%</b>	<b>56</b>	<b>1.7%</b>	<b>21,031</b>	<b>3.8%</b>

Limited English proficiency can significantly impede an individual's ability to access resources or participate in public processes, so it is important to document these populations. LEP individuals account for only 0.7% of the study area's population, as compared to 1.7% for King City and 3.8% for Washington County.

<sup>8</sup> LEP populations include people over five years old who self-report they speak a language other than English and speak English less than well.

## 4 FUTURE LAND USE PLANS

This chapter summarizes the future land use plans for the KTMP study area, as taken from the King City URA 6D Concept Plan and the Draft Transportation System Plan. These future land use plans guide the development of the KTMP and the evaluation of social and environmental justice factors.

### 4.1 Concept Plan – King City Urban Reserve Area 6D

The Concept Plan is a long-range planning framework for the 528-acre Kingston Terrace area (formerly known as Urban Reserve Area 6D). The plan promotes a connected transportation system of new internal streets and paths to provide travel options to and through the district, and take traffic pressure off the County arterials. The arterial streets bounding the study area (SW Roy Rogers and SW Beef Bend Roads) are envisioned to evolve to become urban boulevards providing a pleasant and safe walking and bicycling environment, characteristics the current rural highway design lacks.

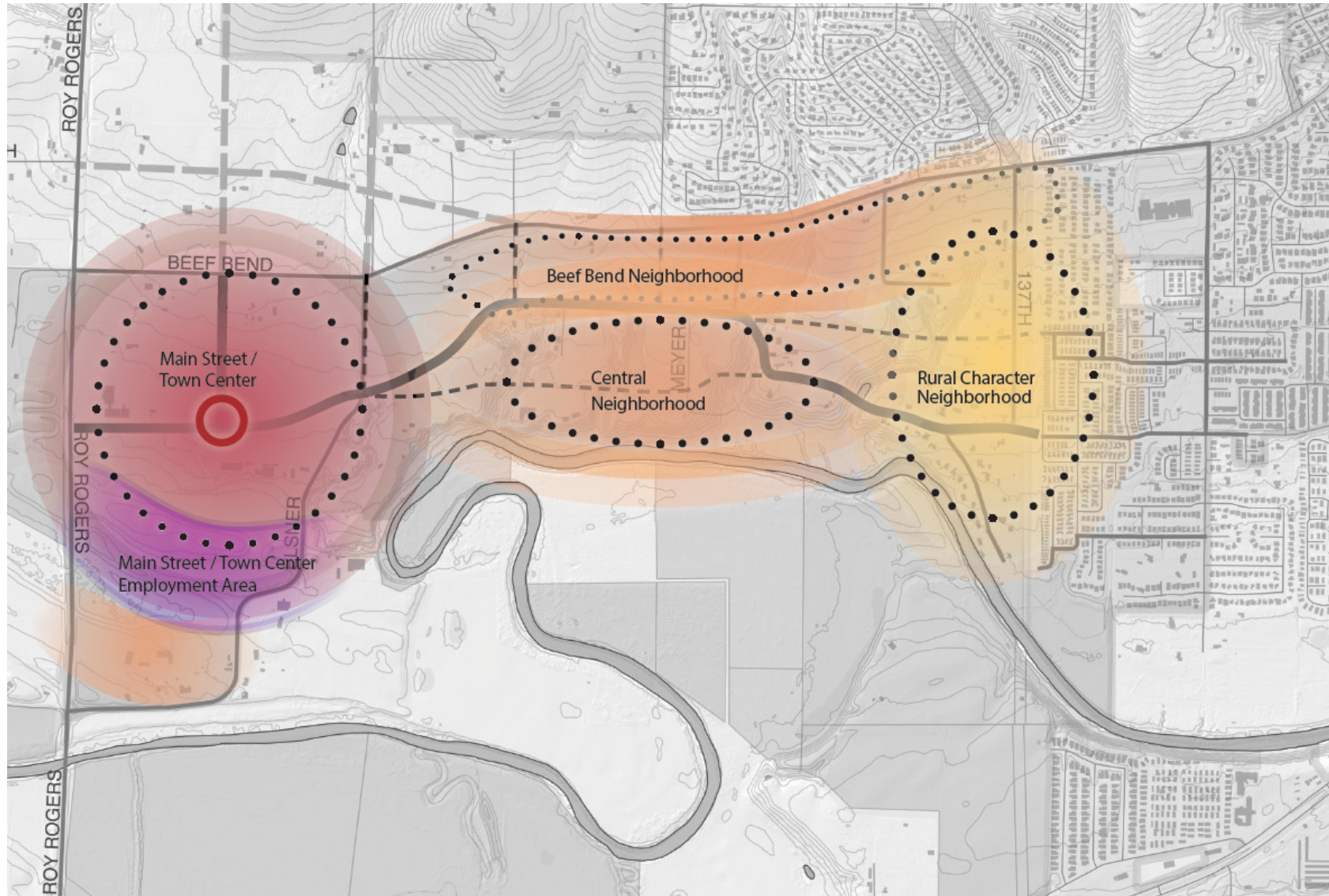
The plan envisions a walkable and transit-friendly environment to support future transit service along major streets such as SW Beef Bend Road, SW Roy Rogers Road, and the southerly extension of SW River Terrace Boulevard. The development concept proposes a diverse mix of development contexts, with the higher density uses in the western and northern portions of the area. Moving east, neighborhoods are planned to become more residential and are defined by the natural edges of the ravines. The least dense areas would be furthest to the east and along the Tualatin River. The overall design philosophy embraces a careful sensitivity to the transition between rural and urban areas.

Key land use guidelines include:

- ◆ Assume the more immediate development will occur on the west side of the URA 6D within first ten years and slow incremental development will occur over a longer period on the east side.
- ◆ Concentrate the intensive mixed land uses and development types to the west.
- ◆ Identify the minimum development yield or number of dwelling units that will be needed to pay for infrastructure, including utilities, streets and parks.
- ◆ Identify the maximum development yield or number of dwelling units that could be achieved while meeting the community vision and goals.

An illustration of the Concept Plan's land use framework is shown in **Figure 2**.

Figure 2. Concept Plan Land Use Framework



## 5 ANALYSIS OF SOCIAL AND ENVIRONMENTAL JUSTICE EFFECTS

The information presented in this report is part of a more detailed refinement of the 2018 Concept Plan originally prepared for Kingston Terrace. Since that initial effort was completed, questions have been raised about the location, alignment, and general characteristics of an east/west collector street through the proposed development. A more in-depth circulation alternatives analysis is being conducted which includes consideration of potential land use impacts and effects on social and environmental justice. This chapter presents a discussion of the development of circulation alternatives including identification of a shortlist of reasonable options, highlights of the analysis process, and key findings relevant to several land use and community design evaluation factors.

### 5.1 East/West Circulation Alternatives

**Figure 3** illustrates the shortlist of reasonable east/west circulation alternatives, identified through a multi-step screening process, for which the social and environmental justice evaluation has been conducted. It should be noted that the alignments illustrated in this figure are both generalized and preliminary. As the analysis process is conducted, alignment modifications may be made and some options may ultimately be rejected.

Additionally, it should also be noted that the precise alignment of the preferred circulation alternatives identified through more detailed planning may well be revised when actual land development and more detailed engineering occur at some point in the future.

### 5.2 Summary of Evaluation Process

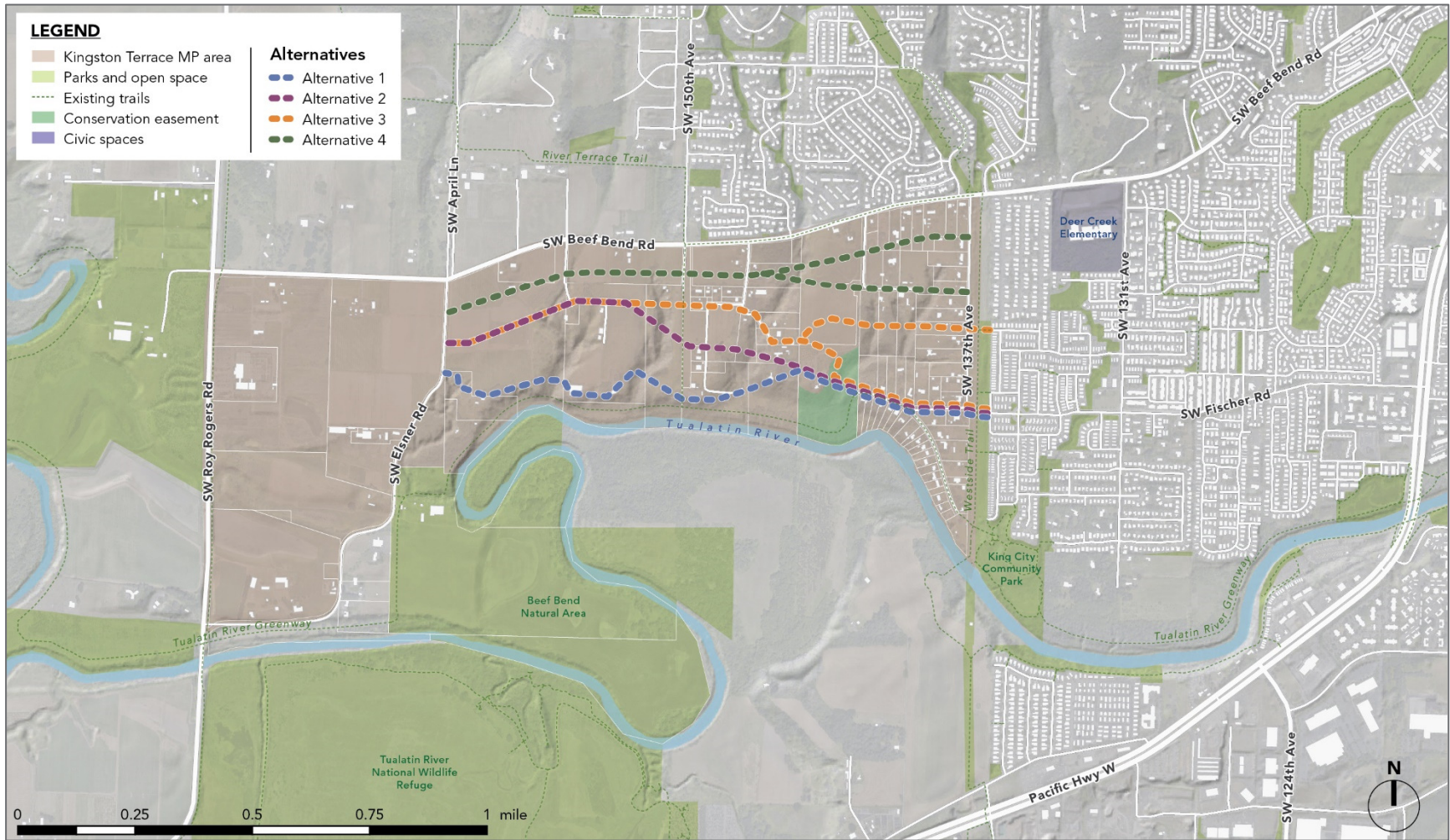
#### 5.2.1 Development of Evaluation Factors

As noted in Chapter 2, the evaluation process is based on a list of factors that are expected to most clearly identify the differences among the shortlisted alternatives. As noted in that chapter, the evaluation process is based largely on qualitative, order-of-magnitude comparisons for which precise results are less important than differences among the alternatives.

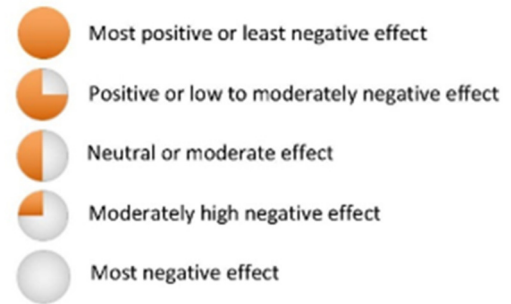
#### 5.2.2 Application of Scoring Factors

Using each of the social and environmental justice evaluation factors, a summary of the key findings and conclusions for each alternative has been prepared and is documented in this chapter. The key findings of this analysis are presented in a summary table which is supported by a more detailed summary in matrix format that has been included in Chapter 6. Based on the summary of both quantitative and qualitative data, each alternative will be scored relative to each factor. Determination of rankings will be based on quantitative analysis data where available. Otherwise, a qualitative assessment of the relative merits of each alternative for each factor will be determined.

Figure 3. East/West Circulation Alternatives



The east/west circulation alternatives will be evaluated for each factor based on five levels of impact as illustrated in the graphic. In considering how best to rank a circulation alternative relative to a specific factor or among categories of factors it will be important to consider how the alternatives compare with each other. Absolute numbers from a quantitative evaluation or the more general qualitative assessments are less important than the comparison among alternatives.



It will also be important in identifying a preferred alternative to recognize that there is no perfect solution – all alternatives will have positive benefits and negative impacts. Existing plans, policies and the regulatory context will be considered in evaluating trade-offs among alternatives, as will the magnitude of identified adverse impacts and positive benefits. A balance among the factors will be sought so that no single category outweighs another but that they are considered on the basis of their merits. Scoring results for all alternatives and factors are presented in Chapter 6.

### 5.3 Evaluation of Land Use and Community Design Factors

This section focuses on the potential effects of the east/west circulation alternatives on social and environmental justice resources and communities. The evaluation was conducted using the factors identified in Chapter 2 and summarized below as they related to sustainable/healthy outcomes, safety, performance, connectivity, and accessibility. Specific factors include:

- Impacts to or support of land use patterns as envisioned in the Concept Plan and evolving Kingston Terrace Master Plan (KTMP)
- Protects existing and new neighborhood cohesion
- Minimizes adverse impacts and provides circulation benefits to those with the least access to transportation resources and the greatest mobility needs
- Order of magnitude impact to historically disadvantaged or marginalized populations

Each of these factors is discussed in more detail in the sub-sections that follow.

#### 5.3.1 Support of Planned Land Use Patterns

This section evaluates how each alternative would impact or support land use patterns as envisioned in the Concept Plan and the evolving Kingston Terrace Master Plan. Analysis results are included in **Table 4**.

As noted in Chapter 4, both the Concept Plan and the Draft King City Transportation System Plan prescribe connections to existing and planned infrastructure in the areas surrounding the study area. Providing no direct east/west connection would not support these future land use plans. Alternatives 1 and 4 are farther from the center of the overall study area, and Alternative 4 additionally provides no direct connection to the existing city to the east. Alternatives 2 and 3 are more central to the study area and planned future development and provide a direct easterly connection.



**Table 4. Support of Planned Land Use Patterns**

<b>Alternative</b>	<b>Potential Impacts on Land Use Patterns</b>
No Direct Connection	Would not support future land use patterns as envisioned in Concept Plan and KTMP
Alternative 1	Peripheral to center of development and farther from higher-density planned land uses in northern portion of site, but provides direct east/west connection to existing city
Alternative 2	Central to development; serves both higher-density planned land uses in northern portion of site and lower-density planned uses in southeastern portion of site; provides direct east/west connection to existing city
Alternative 3	Central to development; serves both higher-density planned land uses in northern portion of site and lower-density planned uses in southeastern portion of site; provides multiple direct east/west connections to existing city
Alternative 4	Closer to higher-density planned land uses in northern portion of site, but peripheral to center of overall development; no direct connections to existing city

### 5.3.2 Support of Existing and New Neighborhood Cohesion

This evaluation looks at how well each of the alternatives would support existing and new neighborhood cohesion. Neighborhood cohesion is an important social and economic justice factor; maintaining cohesion is vital to successful communities. Analysis results are shown in **Table 5**.

**Table 5. Support of Existing and New Neighborhood Cohesion**

<b>Alternative</b>	<b>Potential Impacts on Neighborhood Cohesion</b>
No Direct Connection	Reliance on indirect routes would reduce neighborhood cohesion
Alternative 1	Would provide connection to existing neighborhoods to the east
Alternative 2	Would provide connection to existing neighborhoods to the east
Alternative 3	Would provide multiple connections to existing neighborhoods to the east; some opportunity for connections to the north
Alternative 4	No direct connection to the east of 137th, but provides for connections to the north

Providing no direct east/west connection as the KTMP study area is developed would lead to reliance on indirect routes, reducing neighborhood cohesion. Alternative 4 would provide some opportunities for connections to the north across Beef Bend Road, but provides no direct connection to the existing city. Alternatives 1, 2, and 3 would all provide direct connections to the existing city, helping to support neighborhood cohesion among new and existing neighborhoods. Of these three, the location of Alternative 3 provides some opportunities for northern connections as well, boosting its potential to support neighborhood cohesion.

### 5.3.3 Serves Those with Greatest Transportation Needs and Least Resources

This factor evaluates the extent to which each alternative would serve those with the greatest transportation needs and least resources. To assist in this evaluation, low-income households within a quarter-mile radius of each east/west alternative alignment were identified using the same EJ Screen methodology described in Section 3.1 and are shown in **Table 7**. The analysis results are presented in **Table 8**. EJScreen results for each alternative can be found in **Attachment A**.

**Table 6. Low-Income Households within ¼ Mile of Each Alternative**

Geography	KT Study Area		Alt 1 Focus Area		Alt 2 Focus Area		Alt 3 Focus Area		Alt 4 Focus Area	
	# of HH	% of Total	# of HH	% of Total	# of HH	% of Total	# of HH	% of Total	# of HH	% of Total
Total households	118	--	251	--	259	--	366	--	845	--
Less than \$15,000	7	5.9%	16	6.4%	16	6.2%	23	6.3%	32	3.8%
\$15,000-\$25,000	3	2.5%	8	3.2%	8	3.1%	11	3.0%	14	1.7%
\$25,000-\$50,000	7	5.9%	14	5.6%	14	5.4%	20	5.5%	68	8.0%
\$50,000-\$75,000	17	14.4%	37	14.7%	38	14.7%	54	14.8%	104	12.3%
\$75,000 or more	84	71.2%	177	70.5%	183	70.7%	259	70.8%	627	74.2%
<b>Total low-income HHs (&lt;\$50,000)</b>	<b>17</b>	<b>14.4%</b>	<b>38</b>	<b>15.1%</b>	<b>38</b>	<b>14.7%</b>	<b>54</b>	<b>14.8%</b>	<b>114</b>	<b>13.5%</b>

Note: See Attachment A for maps of the focus areas.

**Table 7. Serves Those with Greatest Transportation Needs and Least Resources**

Alternative	Potential to Serve Those with Greatest Transportation Need and Least Resources
No Direct Connection	Would cause travelers to use circuitous, likely longer routes
Alternative 1	Serves population with highest percentage of households below poverty level; not central to development but provides direct east/west connection
Alternative 2	Serves population with relatively high percentage of households below poverty level; central to development and provides direct east/west connection
Alternative 3	Serves population with relatively high percentage of households below poverty level; central to development and provides direct east/west connection
Alternative 4	Serves population with lowest percentage of households below poverty level; not central to development and provides no direct east/west connection

Looking at the demographics within a quarter-mile radius of the alignments allows for a finer look at the populations that might be affected by each alternative. Alternative 4 would serve the smallest percentage of low-income households; it is also not central to the development and also provides no direct connection to the existing city to the east. Alternative 1 would serve the highest percentage of low-income households and provide a direct connection to the east, although it is not central to the development. In the long term, the population with the greatest transportation need would be better served by direct, central routes and ample connections to the surrounding neighborhoods, all of which would be provided by Alternatives 2 and 3.

### 5.3.4 Impacts to Disadvantaged or Marginalized Population Groups

This factor evaluates the extent to which each alternative would impact disadvantaged or marginalized population groups. To assist in this evaluation, minority and limited English speaking (LEP) populations within a quarter-mile radius of each east/west alternative alignment were identified using the same EJ Screen methodology described in Section 3.1 and are shown in **Tables 9 and 10**. The analysis results are presented in **Table 11**. EJScreen results for each alternative can be found in **Attachment A**.

**Table 8. Minority Populations within ¼ Mile of Each Alternative**

Geography	KT Study Area		Alt 1 Focus Area		Alt 2 Focus Area		Alt 3 Focus Area		Alt 4 Focus Area	
	# of People	% of Total	# of People	% of Total	# of People	% of Total	# of People	% of Total	# of People	% of Total
Total population	314	--	729	--	758	--	1,166	--	2,388	--
White alone	215	68.5%	496	68.0%	517	68.2%	795	68.2%	1,664	69.7%
Black or African American alone	19	6.1%	47	6.4%	47	6.2%	73	6.3%	108	4.5%
American Indian and Alaska Native alone	3	1.0%	7	1.0%	7	0.9%	11	0.9%	14	0.6%
Asian alone	19	6.1%	40	5.5%	45	5.9%	67	5.7%	226	9.5%
Native Hawaiian and Other Pacific Islander alone	0	0.0%	0	0.0%	0	0.0%	0	0.0%	8	0.3%
Some other race alone	0	0.0%	0	0.0%	0	0.0%	0	0.0%	0	0.0%
Two or more races	14	4.5%	32	4.4%	33	4.4%	51	4.4%	87	3.6%
Hispanic or Latino (of any race)	45	14.3%	107	14.7%	109	14.4%	168	14.4%	280	11.7%
<b>Total minority population</b>	<b>100</b>	<b>31.8%</b>	<b>233</b>	<b>32.0%</b>	<b>241</b>	<b>31.8%</b>	<b>370</b>	<b>31.7%</b>	<b>723</b>	<b>30.3%</b>

**Table 9. LEP Populations within ¼ Mile of Each Alternative**

Geography	KT Study Area		Alt 1 Focus Area		Alt 2 Focus Area		Alt 3 Focus Area		Alt 4 Focus Area	
	# of People	% of Total	# of People	% of Total	# of People	% of Total	# of People	% of Total	# of People	% of Total
Total population > 5 years old	279	--	646	--	673	--	1,034	--	2,170	--
Speak only English	218	78.1%	502	77.7%	525	78.0%	806	77.9%	1,732	79.8%
Speak English "very well"	55	19.7%	132	20.4%	135	20.1%	209	20.2%	360	16.6%
Speak English "well"	4	1.4%	8	1.2%	9	1.3%	13	1.3%	50	2.3%
Speak English "not well"	2	0.7%	4	0.6%	4	0.6%	6	0.6%	18	0.8%
Speak English "not at all"	0	0.0%	0	0.0%	0	0.0%	0	0.0%	9	0.4%
<b>Total population speaking English "less than well" ("not well" + "not at all")</b>	<b>2</b>	<b>0.7%</b>	<b>4</b>	<b>0.6%</b>	<b>4</b>	<b>0.6%</b>	<b>6</b>	<b>0.6%</b>	<b>27</b>	<b>1.2%</b>

**Table 10. Impacts to Disadvantaged or Marginalized Population Groups**

<b>Alternative</b>	<b>Potential Impacts to Disadvantaged or Marginalized Population Groups</b>
No Direct Connection	No impacts in the short term; long-term impacts via lack of regional connectivity
Alternative 1	Temporary (construction) impacts to population with highest percentage of minority residents and households below poverty level, but long-term benefits via increased regional connectivity
Alternative 2	Temporary (construction) impacts to population with relatively high percentage of minority residents and households below poverty level, but long-term benefits via increased regional connectivity
Alternative 3	Temporary (construction) impacts to population with relatively high percentage of minority residents and households below poverty level, but long-term benefits via increased regional connectivity
Alternative 4	Temporary (construction) impacts to population with relatively high percentage of minority and LEP residents, but long-term benefits via increased regional connectivity





















There is relatively little difference among the four alternatives with regard to minority and LEP populations. Although all alternatives would present short-term construction impacts to those in the immediate vicinity, they would also provide long-term benefits via increased regional connectivity. Because its construction impacts would potentially reach a larger percentage of minority and low-income populations, Alternative 1 is slightly less desirable than Alternatives 2, 3, and 4. Providing no direct east/west connection would be the least desirable in the long term, causing impacts to disadvantaged populations via lack of regional connectivity.

## 6 SUMMARY OF CONCLUSIONS

Based on the evaluation presented in the previous sections, alternatives were qualitatively scored for each factor using the scoring levels identified in Section 5.2.2. The qualitative scores are shown in **Table 12**, and the final row provides a comparative overall ranking based on each alternative’s individual factor scores. Summary text supporting these rankings is provided in **Table 13**.

Based on the evaluation of social and environmental justice factors, Alternative 3 would be the most desirable option, followed closely by Alternative 1. Providing no direct east/west connection would be the least desirable option.

**Table 11. Comparative Ranking of Land Use and Community Design Factors**

Evaluation Factors	No Direct Connection	Alternative 1	Alternative 2	Alternative 3	Alternative 4
Supports planned land use patterns					
Supports existing and new neighborhood cohesion					
Serves those with greatest transportation needs and least resources					
Impacts to disadvantaged or marginalized population groups					

**Table 12. Summary of Key Findings from Evaluation of Land Use and Community Design Factors**

<b>Evaluation Factors</b>	<b>No Direct Connection</b>	<b>Alternative 1</b>	<b>Alternative 2</b>	<b>Alternative 3</b>	<b>Alternative 4</b>
Supports planned land use patterns	<i>Would not support future land use patterns as envisioned in Concept Plan and KTMP due to the lack of a collecting level street system to move local traffic between neighborhoods and arterials streets.</i>	<i>Peripheral to center of development and farther from higher-density planned land uses in northern portion of site, but provides direct east/west connection to existing city.</i>	<i>Central to development; serves both higher-density planned land uses in northern portion of site and lower-density planned uses in southeastern portion of site; provides direct east/west connection to existing city.</i>	<i>Central to development; serves both higher-density planned land uses in northern portion of site and lower-density planned uses in southeastern portion of site; provides multiple direct east/west connections to existing city.</i>	<i>Closer to higher-density planned land uses in northern portion of site, but peripheral to center of overall development; no direct connections to existing city.</i>
Supports existing and new neighborhood cohesion	<i>Reliance on indirect routes outside of the immediate neighborhood would reduce neighborhood cohesion.</i>	<i>Would provide connection to existing neighborhoods to the east linking Kingston Terrace to the larger community.</i>	<i>Would provide connection to existing neighborhoods to the east linking Kingston Terrace to the larger community.</i>	<i>Would provide multiple connections to existing neighborhoods to the east; some opportunity for connections to the north providing a strong link to the greater community.</i>	<i>No direct connection to the east of 137th, but provides opportunities for connections to the north.</i>
Serves those with greatest transportation needs and least resources	<i>Would cause travelers to use circuitous, likely longer routes reducing potential for future transit service.</i>	<i>Serves population with highest percentage of households below poverty level; not central to development but provides direct east/west connection which could potentially see some form of transit service.</i>	<i>Serves population with relatively high percentage of households below poverty level; central to development and provides direct east/west connection. Greater potential for transit service.</i>	<i>Serves population with relatively high percentage of households below poverty level; central to development and provides direct east/west connection. Greater potential for transit service.</i>	<i>Serves population with lowest percentage of households below poverty level; not central to development and provides no direct east/west connection. Could see some form of localized transit but not regional service.</i>

<p>Impacts to disadvantaged or marginalized population groups</p>	<p><i>No impacts in the short term unless widening of Beef Bend Road east of 137<sup>th</sup> is necessary, then could have substantial impacts to low income and/or elderly population groups; long-term impacts via lack of connection to the region as a whole.</i></p>	<p><i>Temporary (construction) impacts to population with highest percentage of minority residents and households below poverty level, but long-term benefits via increased connection to the region as a whole.</i></p>	<p><i>Temporary (construction) impacts to population with relatively high percentage of minority residents and households below poverty level, but long-term benefits via increased connection to the region as a whole.</i></p>	<p><i>Temporary (construction) impacts to population with relatively high percentage of minority residents and households below poverty level, but long-term benefits via increased connection to the region as a whole.</i></p>	<p><i>Temporary (construction) impacts to population with relatively high percentage of minority and LEP residents, but long-term benefits via increased connection to the region as a whole.</i></p>
---	--	--	--	--	---

***This page intentionally left blank.***



# Attachment A

EJScreen Demographics Reports



Location: User-specified polygonal location  
 Ring (buffer): 0-miles radius  
 Description: Kingston Terrace Study Area

ACS means American Community Survey  
 MOE means Margin of Error

Summary of ACS Estimates		2015 - 2019
Population		314
Population Density (per sq. mile)		290
People of Color Population		100
% People of Color Population		32%
Households		118
Housing Units		118
Housing Units Built Before 1950		4
Per Capita Income		47,352
Land Area (sq. miles) (Source: SF1)		1.08
% Land Area		100%
Water Area (sq. miles) (Source: SF1)		0.00
% Water Area		0%

	2015 - 2019 ACS Estimates	Percent	MOE (±)
<b>Population by Race</b>			
Total	314	100%	531
Population Reporting One Race	301	96%	1,195
White	240	76%	449
Black	19	6%	157
American Indian	5	2%	44
Asian	19	6%	286
Pacific Islander	0	0%	66
Some Other Race	17	5%	193
Population Reporting Two or More Races	14	4%	94
Total Hispanic Population	45	14%	315
Total Non-Hispanic Population	270		
White Alone	215	68%	474
Black Alone	19	6%	157
American Indian Alone	3	1%	31
Non-Hispanic Asian Alone	19	6%	286
Pacific Islander Alone	0	0%	66
Other Race Alone	0	0%	12
Two or More Races Alone	14	4%	94
<b>Population by Sex</b>			
Male	157	50%	337
Female	157	50%	308
<b>Population by Age</b>			
Age 0-4	35	11%	132
Age 0-17	89	28%	265
Age 18+	225	72%	435
Age 65+	41	13%	179

**Data Note:** Detail may not sum to totals due to rounding. Hispanic population can be of any race.

N/A means not available. **Source:** U.S. Census Bureau, American Community Survey (ACS) 2015 - 2019

Location: User-specified polygonal location  
 Ring (buffer): 0-miles radius  
 Description: Kingston Terrace Study Area

	2015 - 2019 ACS Estimates	Percent	MOE (±)
<b>Population 25+ by Educational Attainment</b>			
Total	211	100%	404
Less than 9th Grade	4	2%	45
9th - 12th Grade, No Diploma	7	3%	66
High School Graduate	34	16%	116
Some College, No Degree	45	21%	241
Associate Degree	24	11%	162
Bachelor's Degree or more	98	47%	314
<b>Population Age 5+ Years by Ability to Speak English</b>			
Total	279	100%	517
Speak only English	218	78%	434
Non-English at Home <sup>1+2+3+4</sup>	61	22%	265
<sup>1</sup> Speak English "very well"	55	20%	215
<sup>2</sup> Speak English "well"	4	1%	104
<sup>3</sup> Speak English "not well"	2	1%	47
<sup>4</sup> Speak English "not at all"	0	0%	73
<sup>3+4</sup> Speak English "less than well"	2	1%	86
<sup>2+3+4</sup> Speak English "less than very well"	6	2%	135
<b>Linguistically Isolated Households*</b>			
Total	0	100%	30
Speak Spanish	0	0%	12
Speak Other Indo-European Languages	0	0%	12
Speak Asian-Pacific Island Languages	0	100%	27
Speak Other Languages	0	0%	12
<b>Households by Household Income</b>			
Household Income Base	118	100%	178
< \$15,000	7	6%	55
\$15,000 - \$25,000	3	3%	36
\$25,000 - \$50,000	7	6%	89
\$50,000 - \$75,000	17	14%	84
\$75,000 +	84	71%	271
<b>Occupied Housing Units by Tenure</b>			
Total	118	100%	178
Owner Occupied	100	85%	182
Renter Occupied	18	15%	79
<b>Employed Population Age 16+ Years</b>			
Total	236	100%	437
In Labor Force	159	68%	365
Civilian Unemployed in Labor Force	4	2%	65
Not In Labor Force	76	32%	248

**Data Note:** Detail may not sum to totals due to rounding. Hispanic population can be of anyrace.

N/A means not available. **Source:** U.S. Census Bureau, American Community Survey (ACS)

\*Households in which no one 14 and over speaks English "very well" or speaks English only.

Location: User-specified polygonal location

Ring (buffer): 0-miles radius

Description: Kingston Terrace Study Area

	2015 - 2019 ACS Estimates	Percent	MOE (±)
<b>Population by Language Spoken at Home*</b>			
Total (persons age 5 and above)	1,622	100%	456
English	1,298	80%	431
Spanish	185	11%	247
French	14	1%	50
French Creole	N/A	N/A	N/A
Italian	N/A	N/A	N/A
Portuguese	N/A	N/A	N/A
German	20	1%	73
Yiddish	N/A	N/A	N/A
Other West Germanic	N/A	N/A	N/A
Scandinavian	N/A	N/A	N/A
Greek	N/A	N/A	N/A
Russian	N/A	N/A	N/A
Polish	N/A	N/A	N/A
Serbo-Croatian	N/A	N/A	N/A
Other Slavic	N/A	N/A	N/A
Armenian	N/A	N/A	N/A
Persian	N/A	N/A	N/A
Gujarathi	N/A	N/A	N/A
Hindi	N/A	N/A	N/A
Urdu	N/A	N/A	N/A
Other Indic	N/A	N/A	N/A
Other Indo-European	46	3%	155
Chinese	2	0%	15
Japanese	N/A	N/A	N/A
Korean	33	2%	139
Mon-Khmer, Cambodian	N/A	N/A	N/A
Hmong	N/A	N/A	N/A
Thai	N/A	N/A	N/A
Laotian	N/A	N/A	N/A
Vietnamese	7	0%	31
Other Asian	0	0%	17
Tagalog	7	0%	34
Other Pacific Island	N/A	N/A	N/A
Navajo	N/A	N/A	N/A
Other Native American	N/A	N/A	N/A
Hungarian	N/A	N/A	N/A
Arabic	0	0%	17
Hebrew	N/A	N/A	N/A
African	N/A	N/A	N/A
Other and non-specified	2	0%	15
Total Non-English	323	20%	627

**Data Note:** Detail may not sum to totals due to rounding. Hispanic population can be of any race.

N/A means not available. **Source:** U.S. Census Bureau, American Community Survey (ACS) 2015 - 2019.

\*Population by Language Spoken at Home is available at the census tract summary level and up.

Location: User-specified polygonal location  
 Ring (buffer): 0-miles radius  
 Description: King City, OR

Summary of ACS Estimates		2015 - 2019
Population		3,937
Population Density (per sq. mile)		4,862
People of Color Population		726
% People of Color Population		18%
Households		2,038
Housing Units		2,088
Housing Units Built Before 1950		53
Per Capita Income		37,638
Land Area (sq. miles) (Source: SF1)		0.81
% Land Area		100%
Water Area (sq. miles) (Source: SF1)		0.00
% Water Area		0%

	2015 - 2019 ACS Estimates	Percent	MOE (±)
<b>Population by Race</b>			
Total	3,937	100%	459
Population Reporting One Race	3,850	98%	1,014
White	3,439	87%	438
Black	113	3%	157
American Indian	33	1%	80
Asian	131	3%	134
Pacific Islander	0	0%	12
Some Other Race	133	3%	193
Population Reporting Two or More Races	87	2%	128
Total Hispanic Population	378	10%	315
Total Non-Hispanic Population	3,559		
White Alone	3,211	82%	431
Black Alone	113	3%	157
American Indian Alone	17	0%	31
Non-Hispanic Asian Alone	131	3%	134
Pacific Islander Alone	0	0%	12
Other Race Alone	0	0%	12
Two or More Races Alone	87	2%	128
<b>Population by Sex</b>			
Male	1,646	42%	218
Female	2,290	58%	341
<b>Population by Age</b>			
Age 0-4	219	6%	120
Age 0-17	557	14%	173
Age 18+	3,380	86%	293
Age 65+	1,881	48%	182

**Data Note:** Detail may not sum to totals due to rounding. Hispanic population can be of any race.

N/A means not available. **Source:** U.S. Census Bureau, American Community Survey (ACS) 2015 - 2019

Location: User-specified polygonal location  
 Ring (buffer): 0-miles radius  
 Description: King City, OR

	2015 - 2019 ACS Estimates	Percent	MOE (±)
<b>Population 25+ by Educational Attainment</b>			
Total	3,300	100%	379
Less than 9th Grade	43	1%	61
9th - 12th Grade, No Diploma	111	3%	66
High School Graduate	675	20%	184
Some College, No Degree	853	26%	178
Associate Degree	292	9%	82
Bachelor's Degree or more	1,326	40%	159
<b>Population Age 5+ Years by Ability to Speak English</b>			
Total	3,718	100%	438
Speak only English	3,045	82%	305
Non-English at Home <sup>1+2+3+4</sup>	673	18%	237
<sup>1</sup> Speak English "very well"	583	16%	215
<sup>2</sup> Speak English "well"	34	1%	77
<sup>3</sup> Speak English "not well"	55	1%	63
<sup>4</sup> Speak English "not at all"	0	0%	12
<sup>3+4</sup> Speak English "less than well"	55	1%	63
<sup>2+3+4</sup> Speak English "less than very well"	90	2%	99
<b>Linguistically Isolated Households*</b>			
Total	16	100%	29
Speak Spanish	0	0%	12
Speak Other Indo-European Languages	16	100%	26
Speak Asian-Pacific Island Languages	0	0%	12
Speak Other Languages	0	0%	12
<b>Households by Household Income</b>			
Household Income Base	2,038	100%	122
< \$15,000	310	15%	88
\$15,000 - \$25,000	223	11%	63
\$25,000 - \$50,000	405	20%	131
\$50,000 - \$75,000	405	20%	90
\$75,000 +	694	34%	134
<b>Occupied Housing Units by Tenure</b>			
Total	2,038	100%	122
Owner Occupied	1,682	83%	117
Renter Occupied	356	17%	82
<b>Employed Population Age 16+ Years</b>			
Total	3,455	100%	401
In Labor Force	1,381	40%	210
Civilian Unemployed in Labor Force	50	1%	37
Not In Labor Force	2,074	60%	292

**Data Note:** Detail may not sum to totals due to rounding. Hispanic population can be of anyrace.

N/A means not available. **Source:** U.S. Census Bureau, American Community Survey (ACS)

\*Households in which no one 14 and over speaks English "very well" or speaks English only.

Location: User-specified polygonal location  
 Ring (buffer): 0-miles radius  
 Description: King City, OR

	2015 - 2019 ACS Estimates	Percent	MOE (±)
<b>Population by Language Spoken at Home*</b>			
Total (persons age 5 and above)	2,559	100%	456
English	2,049	80%	431
Spanish	292	11%	247
French	21	1%	50
French Creole	N/A	N/A	N/A
Italian	N/A	N/A	N/A
Portuguese	N/A	N/A	N/A
German	32	1%	73
Yiddish	N/A	N/A	N/A
Other West Germanic	N/A	N/A	N/A
Scandinavian	N/A	N/A	N/A
Greek	N/A	N/A	N/A
Russian	N/A	N/A	N/A
Polish	N/A	N/A	N/A
Serbo-Croatian	N/A	N/A	N/A
Other Slavic	N/A	N/A	N/A
Armenian	N/A	N/A	N/A
Persian	N/A	N/A	N/A
Gujarathi	N/A	N/A	N/A
Hindi	N/A	N/A	N/A
Urdu	N/A	N/A	N/A
Other Indic	N/A	N/A	N/A
Other Indo-European	72	3%	155
Chinese	4	0%	15
Japanese	N/A	N/A	N/A
Korean	52	2%	139
Mon-Khmer, Cambodian	N/A	N/A	N/A
Hmong	N/A	N/A	N/A
Thai	N/A	N/A	N/A
Laotian	N/A	N/A	N/A
Vietnamese	10	0%	31
Other Asian	0	0%	17
Tagalog	10	0%	34
Other Pacific Island	N/A	N/A	N/A
Navajo	N/A	N/A	N/A
Other Native American	N/A	N/A	N/A
Hungarian	N/A	N/A	N/A
Arabic	0	0%	17
Hebrew	N/A	N/A	N/A
African	N/A	N/A	N/A
Other and non-specified	4	0%	15
Total Non-English	510	20%	627

**Data Note:** Detail may not sum to totals due to rounding. Hispanic population can be of any race.  
 N/A means not available. **Source:** U.S. Census Bureau, American Community Survey (ACS) 2015 - 2019.  
 \*Population by Language Spoken at Home is available at the census tract summary level and up.



Location: Washington County  
 Ring (buffer): 0-mile radius  
 Description:

Summary of ACS Estimates	2015 - 2019
Population	589,481
Population Density (per sq. mile)	814
People of Color Population	202,025
% People of Color Population	34%
Households	219,053
Housing Units	229,077
Housing Units Built Before 1950	10,861
Per Capita Income	39,679
Land Area (sq. miles) (Source: SF1)	724.27
% Land Area	100%
Water Area (sq. miles) (Source: SF1)	2.36
% Water Area	0%

	2015 - 2019 ACS Estimates	Percent	MOE (±)
<b>Population by Race</b>			
Total	589,481	100%	0
Population Reporting One Race	557,497	95%	7,636
White	447,201	76%	2,484
Black	11,897	2%	609
American Indian	3,446	1%	671
Asian	62,545	11%	1,032
Pacific Islander	2,514	0%	340
Some Other Race	29,894	5%	2,500
Population Reporting Two or More Races	31,984	5%	1,613
Total Hispanic Population	98,201	17%	0
Total Non-Hispanic Population	491,280		
White Alone	387,456	66%	292
Black Alone	11,469	2%	596
American Indian Alone	1,539	0%	275
Non-Hispanic Asian Alone	62,050	11%	965
Pacific Islander Alone	2,417	0%	321
Other Race Alone	1,025	0%	301
Two or More Races Alone	25,324	4%	1,191
<b>Population by Sex</b>			
Male	291,701	49%	80
Female	297,780	51%	80
<b>Population by Age</b>			
Age 0-4	35,971	6%	65
Age 0-17	136,892	23%	1,361
Age 18+	452,589	77%	2,788
Age 65+	76,361	13%	1,478

**Data Note:** Detail may not sum to totals due to rounding. Hispanic population can be of any race.

N/A means not available. **Source:** U.S. Census Bureau, American Community Survey (ACS) 2015 - 2019

Location: Washington County  
 Ring (buffer): 0-mile radius  
 Description:

	2015 - 2019 ACS Estimates	Percent	MOE (±)
<b>Population 25+ by Educational Attainment</b>			
Total	404,385	100%	124
Less than 9th Grade	15,228	4%	1,035
9th - 12th Grade, No Diploma	16,374	4%	1,018
High School Graduate	70,243	17%	1,732
Some College, No Degree	87,072	22%	2,352
Associate Degree	35,743	9%	1,316
Bachelor's Degree or more	179,725	44%	2,608
<b>Population Age 5+ Years by Ability to Speak English</b>			
Total	553,510	100%	62
Speak only English	416,442	75%	2,209
Non-English at Home <sup>1+2+3+4</sup>	137,068	25%	2,654
<sup>1</sup> Speak English "very well"	88,241	16%	2,411
<sup>2</sup> Speak English "well"	27,796	5%	1,331
<sup>3</sup> Speak English "not well"	15,932	3%	1,087
<sup>4</sup> Speak English "not at all"	5,099	1%	675
<sup>3+4</sup> Speak English "less than well"	21,031	4%	1,280
<sup>2+3+4</sup> Speak English "less than very well"	48,827	9%	1,846
<b>Linguistically Isolated Households*</b>			
Total	8,478	100%	718
Speak Spanish	3,734	44%	518
Speak Other Indo-European Languages	1,242	15%	235
Speak Asian-Pacific Island Languages	3,110	37%	409
Speak Other Languages	392	5%	159
<b>Households by Household Income</b>			
Household Income Base	219,053	100%	1,123
< \$15,000	12,775	6%	887
\$15,000 - \$25,000	12,668	6%	792
\$25,000 - \$50,000	37,828	17%	1,403
\$50,000 - \$75,000	36,464	17%	1,204
\$75,000 +	119,318	54%	2,063
<b>Occupied Housing Units by Tenure</b>			
Total	219,053	100%	1,123
Owner Occupied	135,022	62%	1,281
Renter Occupied	84,031	38%	1,330
<b>Employed Population Age 16+ Years</b>			
Total	467,997	100%	451
In Labor Force	323,405	69%	1,830
Civilian Unemployed in Labor Force	14,106	3%	809
Not In Labor Force	144,592	31%	1,903

**Data Note:** Detail may not sum to totals due to rounding. Hispanic population can be of anyrace.

N/A means not available. **Source:** U.S. Census Bureau, American Community Survey (ACS)

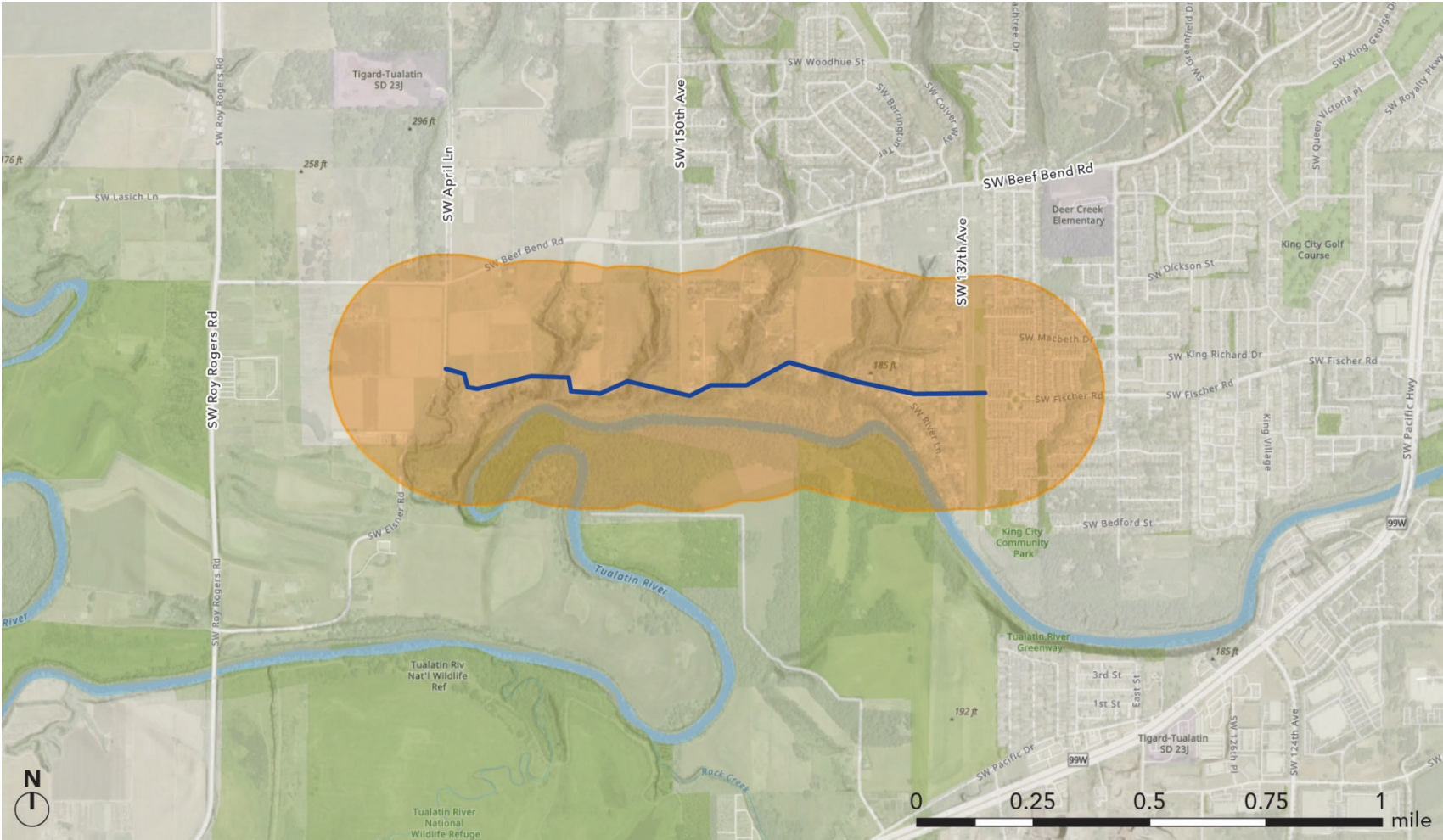
\*Households in which no one 14 and over speaks English "very well" or speaks English only.

Location: Washington County  
 Ring (buffer): 0-mile radius  
 Description:

	2015 - 2019 ACS Estimates	Percent	MOE (±)
<b>Population by Language Spoken at Home*</b>			
Total (persons age 5 and above)	553,510	100%	62
English	416,442	75%	2,567
Spanish	67,971	12%	1,714
French	2,154	0%	1,099
French Creole	N/A	N/A	N/A
Italian	N/A	N/A	N/A
Portuguese	N/A	N/A	N/A
German	3,066	1%	550
Yiddish	N/A	N/A	N/A
Other West Germanic	N/A	N/A	N/A
Scandinavian	N/A	N/A	N/A
Greek	N/A	N/A	N/A
Russian	N/A	N/A	N/A
Polish	N/A	N/A	N/A
Serbo-Croatian	N/A	N/A	N/A
Other Slavic	N/A	N/A	N/A
Armenian	N/A	N/A	N/A
Persian	N/A	N/A	N/A
Gujarathi	N/A	N/A	N/A
Hindi	N/A	N/A	N/A
Urdu	N/A	N/A	N/A
Other Indic	N/A	N/A	N/A
Other Indo-European	15,131	3%	1,371
Chinese	8,343	2%	904
Japanese	N/A	N/A	N/A
Korean	5,046	1%	977
Mon-Khmer, Cambodian	N/A	N/A	N/A
Hmong	N/A	N/A	N/A
Thai	N/A	N/A	N/A
Laotian	N/A	N/A	N/A
Vietnamese	6,310	1%	985
Other Asian	13,620	2%	1,153
Tagalog	4,285	1%	905
Other Pacific Island	N/A	N/A	N/A
Navajo	N/A	N/A	N/A
Other Native American	N/A	N/A	N/A
Hungarian	N/A	N/A	N/A
Arabic	3,467	1%	879
Hebrew	N/A	N/A	N/A
African	N/A	N/A	N/A
Other and non-specified	3,032	1%	733
Total Non-English	137,068	25%	2,568

**Data Note:** Detail may not sum to totals due to rounding. Hispanic population can be of any race.  
 N/A means not available. **Source:** U.S. Census Bureau, American Community Survey (ACS) 2015 - 2019.  
 \*Population by Language Spoken at Home is available at the census tract summary level and up.

Alternative 1 Alignment and ¼ Mile Buffer



Location: User-specified polygonal location  
 Ring (buffer): 0-miles radius  
 Description: Alternative 1 study area

Summary of ACS Estimates		2015 - 2019
Population		729
Population Density (per sq. mile)		847
People of Color Population		233
% People of Color Population		32%
Households		251
Housing Units		251
Housing Units Built Before 1950		9
Per Capita Income		40,848
Land Area (sq. miles) (Source: SF1)		0.86
% Land Area		100%
Water Area (sq. miles) (Source: SF1)		0.00
% Water Area		0%

	2015 - 2019 ACS Estimates	Percent	MOE (±)
<b>Population by Race</b>			
Total	729	100%	328
Population Reporting One Race	697	96%	863
White	555	76%	323
Black	47	6%	157
American Indian	13	2%	44
Asian	40	5%	134
Pacific Islander	0	0%	12
Some Other Race	42	6%	193
Population Reporting Two or More Races	32	4%	94
Total Hispanic Population	107	15%	315
Total Non-Hispanic Population	622		
White Alone	496	68%	353
Black Alone	47	6%	157
American Indian Alone	7	1%	31
Non-Hispanic Asian Alone	40	5%	134
Pacific Islander Alone	0	0%	12
Other Race Alone	0	0%	12
Two or More Races Alone	32	4%	94
<b>Population by Sex</b>			
Male	364	50%	218
Female	365	50%	199
<b>Population by Age</b>			
Age 0-4	83	11%	120
Age 0-17	208	29%	173
Age 18+	521	71%	277
Age 65+	93	13%	122

**Data Note:** Detail may not sum to totals due to rounding. Hispanic population can be of any race.

N/A means not available. **Source:** U.S. Census Bureau, American Community Survey (ACS) 2015 - 2019

Location: User-specified polygonal location  
 Ring (buffer): 0-miles radius  
 Description: Alternative 1 study area

	2015 - 2019 ACS Estimates	Percent	MOE (±)
<b>Population 25+ by Educational Attainment</b>			
Total	489	100%	258
Less than 9th Grade	9	2%	45
9th - 12th Grade, No Diploma	17	4%	66
High School Graduate	80	16%	116
Some College, No Degree	103	21%	154
Associate Degree	54	11%	82
Bachelor's Degree or more	225	46%	158
<b>Population Age 5+ Years by Ability to Speak English</b>			
Total	646	100%	319
Speak only English	502	78%	305
Non-English at Home <sup>1+2+3+4</sup>	144	22%	237
<sup>1</sup> Speak English "very well"	132	20%	215
<sup>2</sup> Speak English "well"	8	1%	39
<sup>3</sup> Speak English "not well"	4	1%	23
<sup>4</sup> Speak English "not at all"	0	0%	12
<sup>3+4</sup> Speak English "less than well"	4	1%	23
<sup>2+3+4</sup> Speak English "less than very well"	12	2%	43
<b>Linguistically Isolated Households*</b>			
Total	0	0%	12
Speak Spanish	0	0%	12
Speak Other Indo-European Languages	0	0%	12
Speak Asian-Pacific Island Languages	0	0%	12
Speak Other Languages	0	0%	12
<b>Households by Household Income</b>			
Household Income Base	251	100%	103
< \$15,000	16	6%	55
\$15,000 - \$25,000	8	3%	36
\$25,000 - \$50,000	14	5%	62
\$50,000 - \$75,000	37	15%	60
\$75,000 +	177	70%	134
<b>Occupied Housing Units by Tenure</b>			
Total	251	100%	103
Owner Occupied	213	85%	112
Renter Occupied	38	15%	56
<b>Employed Population Age 16+ Years</b>			
Total	546	100%	280
In Labor Force	367	67%	210
Civilian Unemployed in Labor Force	9	2%	30
Not In Labor Force	179	33%	178

**Data Note:** Detail may not sum to totals due to rounding. Hispanic population can be of anyrace.

N/A means not available. **Source:** U.S. Census Bureau, American Community Survey (ACS)

\*Households in which no one 14 and over speaks English "very well" or speaks English only.

Location: User-specified polygonal location

Ring (buffer): 0-miles radius

Description: Alternative 1 study area

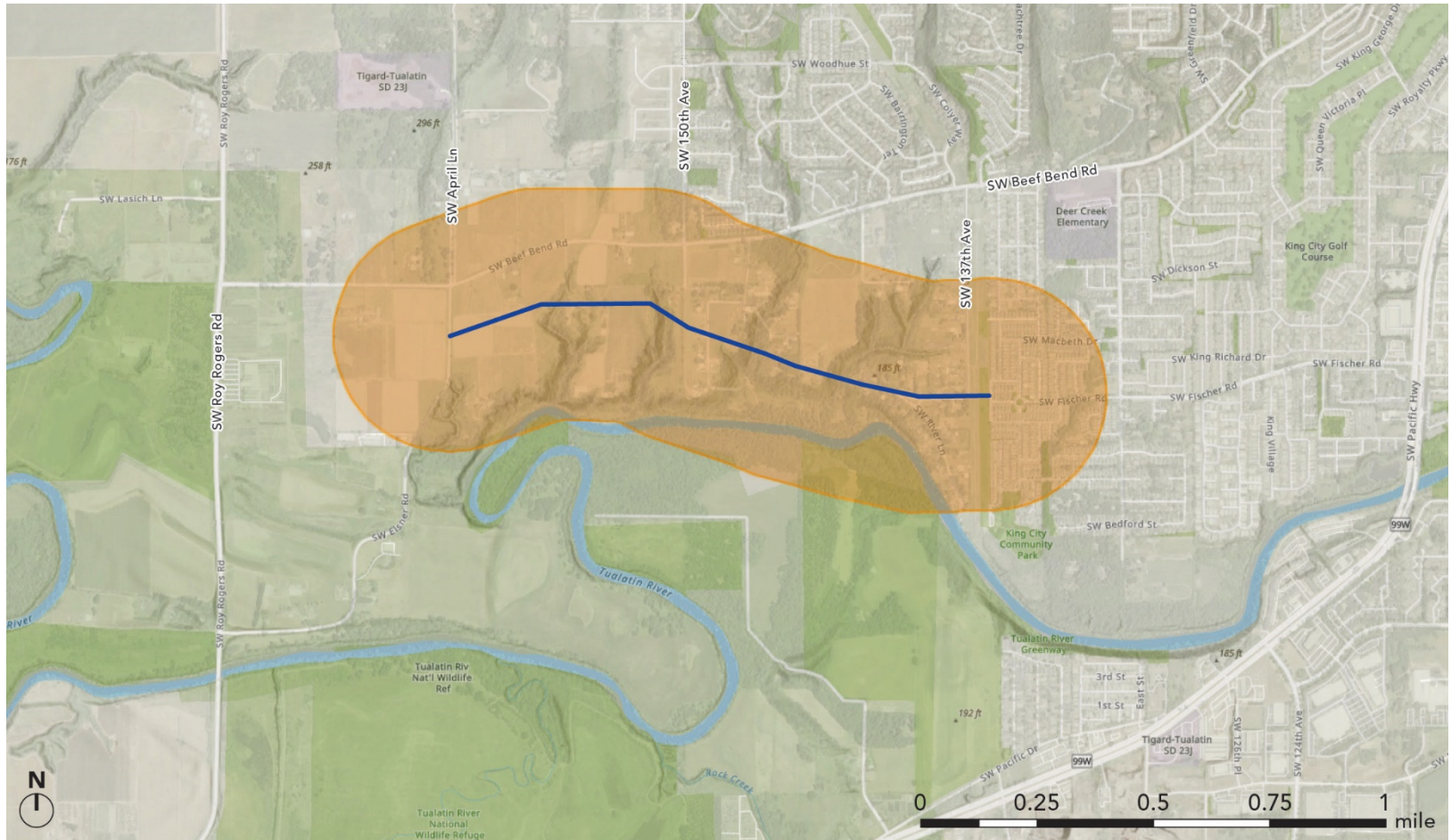
	2015 - 2019 ACS Estimates	Percent	MOE (±)
<b>Population by Language Spoken at Home*</b>			
Total (persons age 5 and above)	1,622	100%	456
English	1,298	80%	431
Spanish	185	11%	247
French	14	1%	50
French Creole	N/A	N/A	N/A
Italian	N/A	N/A	N/A
Portuguese	N/A	N/A	N/A
German	20	1%	73
Yiddish	N/A	N/A	N/A
Other West Germanic	N/A	N/A	N/A
Scandinavian	N/A	N/A	N/A
Greek	N/A	N/A	N/A
Russian	N/A	N/A	N/A
Polish	N/A	N/A	N/A
Serbo-Croatian	N/A	N/A	N/A
Other Slavic	N/A	N/A	N/A
Armenian	N/A	N/A	N/A
Persian	N/A	N/A	N/A
Gujarathi	N/A	N/A	N/A
Hindi	N/A	N/A	N/A
Urdu	N/A	N/A	N/A
Other Indic	N/A	N/A	N/A
Other Indo-European	46	3%	155
Chinese	2	0%	15
Japanese	N/A	N/A	N/A
Korean	33	2%	139
Mon-Khmer, Cambodian	N/A	N/A	N/A
Hmong	N/A	N/A	N/A
Thai	N/A	N/A	N/A
Laotian	N/A	N/A	N/A
Vietnamese	7	0%	31
Other Asian	0	0%	17
Tagalog	7	0%	34
Other Pacific Island	N/A	N/A	N/A
Navajo	N/A	N/A	N/A
Other Native American	N/A	N/A	N/A
Hungarian	N/A	N/A	N/A
Arabic	0	0%	17
Hebrew	N/A	N/A	N/A
African	N/A	N/A	N/A
Other and non-specified	2	0%	15
Total Non-English	323	20%	627

**Data Note:** Detail may not sum to totals due to rounding. Hispanic population can be of any race.

N/A means not available. **Source:** U.S. Census Bureau, American Community Survey (ACS) 2015 - 2019.

\*Population by Language Spoken at Home is available at the census tract summary level and up.

## Alternative 2 Alignment and ¼ Mile Buffer





Location: User-specified polygonal location  
 Ring (buffer): 0-miles radius  
 Description: Alternative 2 study area

Summary of ACS Estimates		2015 - 2019
Population		758
Population Density (per sq. mile)		792
People of Color Population		241
% People of Color Population		32%
Households		259
Housing Units		260
Housing Units Built Before 1950		9
Per Capita Income		47,352
Land Area (sq. miles) (Source: SF1)		0.96
% Land Area		100%
Water Area (sq. miles) (Source: SF1)		0.00
% Water Area		0%

	2015 - 2019 ACS Estimates	Percent	MOE (±)
<b>Population by Race</b>			
Total	758	100%	531
Population Reporting One Race	725	96%	1,195
White	578	76%	449
Black	47	6%	157
American Indian	13	2%	44
Asian	45	6%	286
Pacific Islander	0	0%	66
Some Other Race	42	6%	193
Population Reporting Two or More Races	33	4%	94
Total Hispanic Population	109	14%	315
Total Non-Hispanic Population	649		
White Alone	517	68%	474
Black Alone	47	6%	157
American Indian Alone	7	1%	31
Non-Hispanic Asian Alone	45	6%	286
Pacific Islander Alone	0	0%	66
Other Race Alone	0	0%	12
Two or More Races Alone	33	4%	94
<b>Population by Sex</b>			
Male	379	50%	337
Female	379	50%	308
<b>Population by Age</b>			
Age 0-4	85	11%	132
Age 0-17	215	28%	265
Age 18+	543	72%	435
Age 65+	98	13%	179

**Data Note:** Detail may not sum to totals due to rounding. Hispanic population can be of any race.

N/A means not available. **Source:** U.S. Census Bureau, American Community Survey (ACS) 2015 - 2019

Location: User-specified polygonal location  
 Ring (buffer): 0-miles radius  
 Description: Alternative 2 study area

	2015 - 2019 ACS Estimates	Percent	MOE (±)
<b>Population 25+ by Educational Attainment</b>			
Total	509	100%	404
Less than 9th Grade	9	2%	45
9th - 12th Grade, No Diploma	18	3%	66
High School Graduate	82	16%	116
Some College, No Degree	107	21%	241
Associate Degree	57	11%	162
Bachelor's Degree or more	236	46%	314
<b>Population Age 5+ Years by Ability to Speak English</b>			
Total	673	100%	517
Speak only English	525	78%	434
Non-English at Home <sup>1+2+3+4</sup>	148	22%	265
<sup>1</sup> Speak English "very well"	135	20%	215
<sup>2</sup> Speak English "well"	9	1%	104
<sup>3</sup> Speak English "not well"	4	1%	47
<sup>4</sup> Speak English "not at all"	0	0%	73
<sup>3+4</sup> Speak English "less than well"	4	1%	86
<sup>2+3+4</sup> Speak English "less than very well"	13	2%	135
<b>Linguistically Isolated Households*</b>			
Total	0	100%	30
Speak Spanish	0	0%	12
Speak Other Indo-European Languages	0	0%	12
Speak Asian-Pacific Island Languages	0	100%	27
Speak Other Languages	0	0%	12
<b>Households by Household Income</b>			
Household Income Base	259	100%	178
< \$15,000	16	6%	55
\$15,000 - \$25,000	8	3%	36
\$25,000 - \$50,000	14	6%	89
\$50,000 - \$75,000	38	15%	84
\$75,000 +	183	71%	271
<b>Occupied Housing Units by Tenure</b>			
Total	259	100%	178
Owner Occupied	220	85%	182
Renter Occupied	39	15%	79
<b>Employed Population Age 16+ Years</b>			
Total	569	100%	437
In Labor Force	384	67%	365
Civilian Unemployed in Labor Force	9	2%	65
Not In Labor Force	185	33%	248

**Data Note:** Detail may not sum to totals due to rounding. Hispanic population can be of anyrace.

N/A means not available. **Source:** U.S. Census Bureau, American Community Survey (ACS)

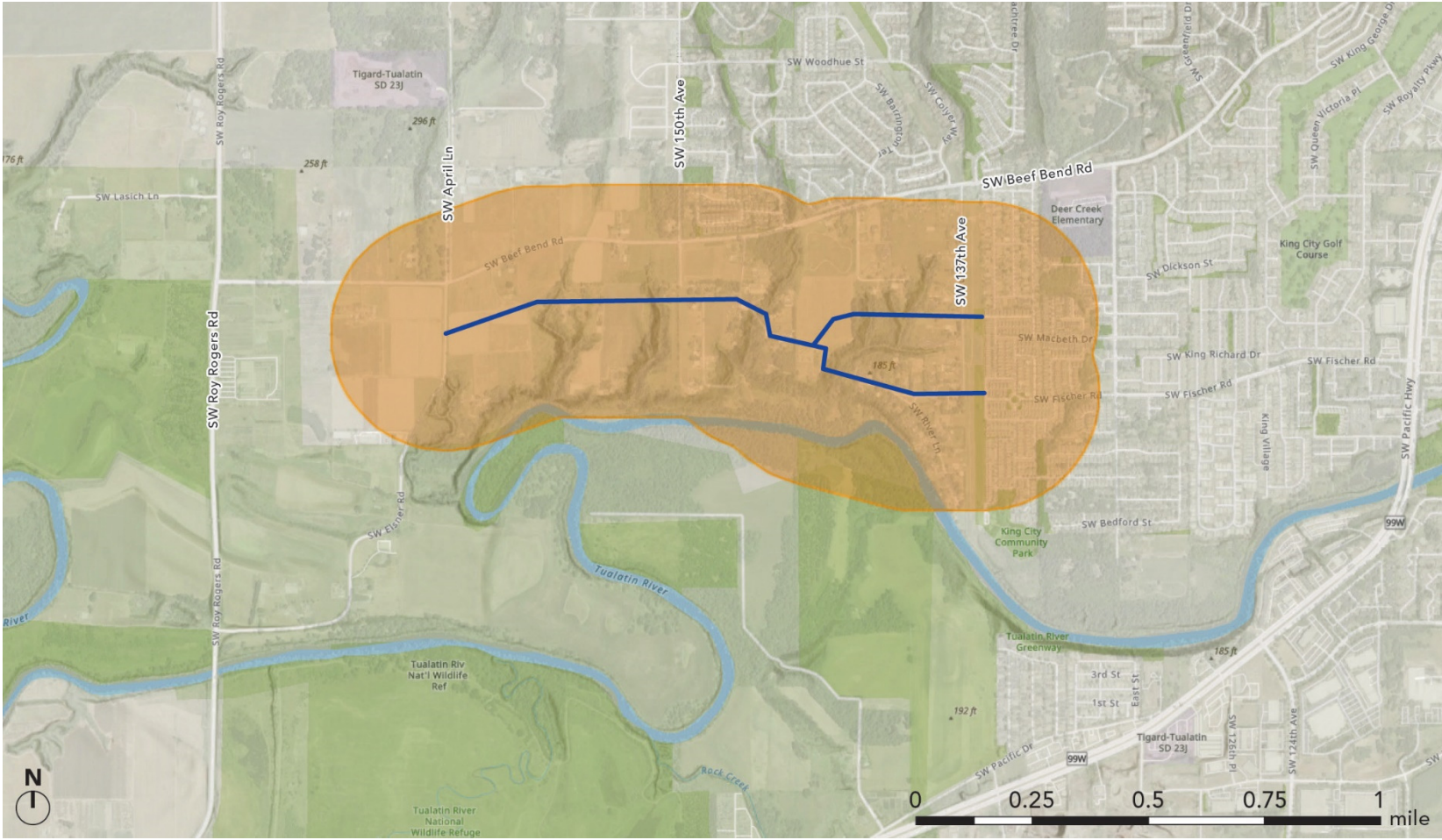
\*Households in which no one 14 and over speaks English "very well" or speaks English only.

Location: User-specified polygonal location  
 Ring (buffer): 0-miles radius  
 Description: Alternative 2 study area

	2015 - 2019 ACS Estimates	Percent	MOE (±)
<b>Population by Language Spoken at Home*</b>			
Total (persons age 5 and above)	1,622	100%	456
English	1,298	80%	431
Spanish	185	11%	247
French	14	1%	50
French Creole	N/A	N/A	N/A
Italian	N/A	N/A	N/A
Portuguese	N/A	N/A	N/A
German	20	1%	73
Yiddish	N/A	N/A	N/A
Other West Germanic	N/A	N/A	N/A
Scandinavian	N/A	N/A	N/A
Greek	N/A	N/A	N/A
Russian	N/A	N/A	N/A
Polish	N/A	N/A	N/A
Serbo-Croatian	N/A	N/A	N/A
Other Slavic	N/A	N/A	N/A
Armenian	N/A	N/A	N/A
Persian	N/A	N/A	N/A
Gujarathi	N/A	N/A	N/A
Hindi	N/A	N/A	N/A
Urdu	N/A	N/A	N/A
Other Indic	N/A	N/A	N/A
Other Indo-European	46	3%	155
Chinese	2	0%	15
Japanese	N/A	N/A	N/A
Korean	33	2%	139
Mon-Khmer, Cambodian	N/A	N/A	N/A
Hmong	N/A	N/A	N/A
Thai	N/A	N/A	N/A
Laotian	N/A	N/A	N/A
Vietnamese	7	0%	31
Other Asian	0	0%	17
Tagalog	7	0%	34
Other Pacific Island	N/A	N/A	N/A
Navajo	N/A	N/A	N/A
Other Native American	N/A	N/A	N/A
Hungarian	N/A	N/A	N/A
Arabic	0	0%	17
Hebrew	N/A	N/A	N/A
African	N/A	N/A	N/A
Other and non-specified	2	0%	15
Total Non-English	323	20%	627

**Data Note:** Detail may not sum to totals due to rounding. Hispanic population can be of any race.  
 N/A means not available. **Source:** U.S. Census Bureau, American Community Survey (ACS) 2015 - 2019.  
 \*Population by Language Spoken at Home is available at the census tract summary level and up.

### Alternative 3 Alignment and ¼ Mile Buffer



Location: User-specified polygonal location  
 Ring (buffer): 0-miles radius  
 Description: Alternative 3 study area

Summary of ACS Estimates		2015 - 2019
Population		1,166
Population Density (per sq. mile)		1,188
People of Color Population		371
% People of Color Population		32%
Households		366
Housing Units		367
Housing Units Built Before 1950		13
Per Capita Income		47,352
Land Area (sq. miles) (Source: SF1)		0.98
% Land Area		100%
Water Area (sq. miles) (Source: SF1)		0.00
% Water Area		0%

	2015 - 2019 ACS Estimates	Percent	MOE (±)
<b>Population by Race</b>			
Total	1,166	100%	531
Population Reporting One Race	1,115	96%	1,195
White	888	76%	449
Black	73	6%	157
American Indian	21	2%	44
Asian	67	6%	286
Pacific Islander	0	0%	66
Some Other Race	66	6%	193
Population Reporting Two or More Races	51	4%	94
Total Hispanic Population	168	14%	315
Total Non-Hispanic Population	998		
White Alone	795	68%	474
Black Alone	73	6%	157
American Indian Alone	11	1%	31
Non-Hispanic Asian Alone	67	6%	286
Pacific Islander Alone	0	0%	66
Other Race Alone	0	0%	12
Two or More Races Alone	51	4%	94
<b>Population by Sex</b>			
Male	582	50%	337
Female	584	50%	308
<b>Population by Age</b>			
Age 0-4	132	11%	132
Age 0-17	331	28%	265
Age 18+	835	72%	435
Age 65+	150	13%	179

**Data Note:** Detail may not sum to totals due to rounding. Hispanic population can be of any race.

N/A means not available. **Source:** U.S. Census Bureau, American Community Survey (ACS) 2015 - 2019

Location: User-specified polygonal location  
 Ring (buffer): 0-miles radius  
 Description: Alternative 3 study area

	2015 - 2019 ACS Estimates	Percent	MOE (±)
<b>Population 25+ by Educational Attainment</b>			
Total	783	100%	404
Less than 9th Grade	15	2%	45
9th - 12th Grade, No Diploma	27	3%	66
High School Graduate	127	16%	116
Some College, No Degree	165	21%	241
Associate Degree	87	11%	162
Bachelor's Degree or more	362	46%	314
<b>Population Age 5+ Years by Ability to Speak English</b>			
Total	1,034	100%	517
Speak only English	806	78%	434
Non-English at Home <sup>1+2+3+4</sup>	229	22%	265
<sup>1</sup> Speak English "very well"	209	20%	215
<sup>2</sup> Speak English "well"	13	1%	104
<sup>3</sup> Speak English "not well"	6	1%	47
<sup>4</sup> Speak English "not at all"	0	0%	73
<sup>3+4</sup> Speak English "less than well"	6	1%	86
<sup>2+3+4</sup> Speak English "less than very well"	20	2%	135
<b>Linguistically Isolated Households*</b>			
Total	0	100%	30
Speak Spanish	0	0%	12
Speak Other Indo-European Languages	0	0%	12
Speak Asian-Pacific Island Languages	0	100%	27
Speak Other Languages	0	0%	12
<b>Households by Household Income</b>			
Household Income Base	366	100%	178
< \$15,000	23	6%	55
\$15,000 - \$25,000	11	3%	36
\$25,000 - \$50,000	20	6%	89
\$50,000 - \$75,000	54	15%	84
\$75,000 +	259	71%	271
<b>Occupied Housing Units by Tenure</b>			
Total	366	100%	178
Owner Occupied	311	85%	182
Renter Occupied	55	15%	79
<b>Employed Population Age 16+ Years</b>			
Total	874	100%	437
In Labor Force	589	67%	365
Civilian Unemployed in Labor Force	14	2%	65
Not In Labor Force	285	33%	248

**Data Note:** Detail may not sum to totals due to rounding. Hispanic population can be of anyrace.

N/A means not available. **Source:** U.S. Census Bureau, American Community Survey (ACS)

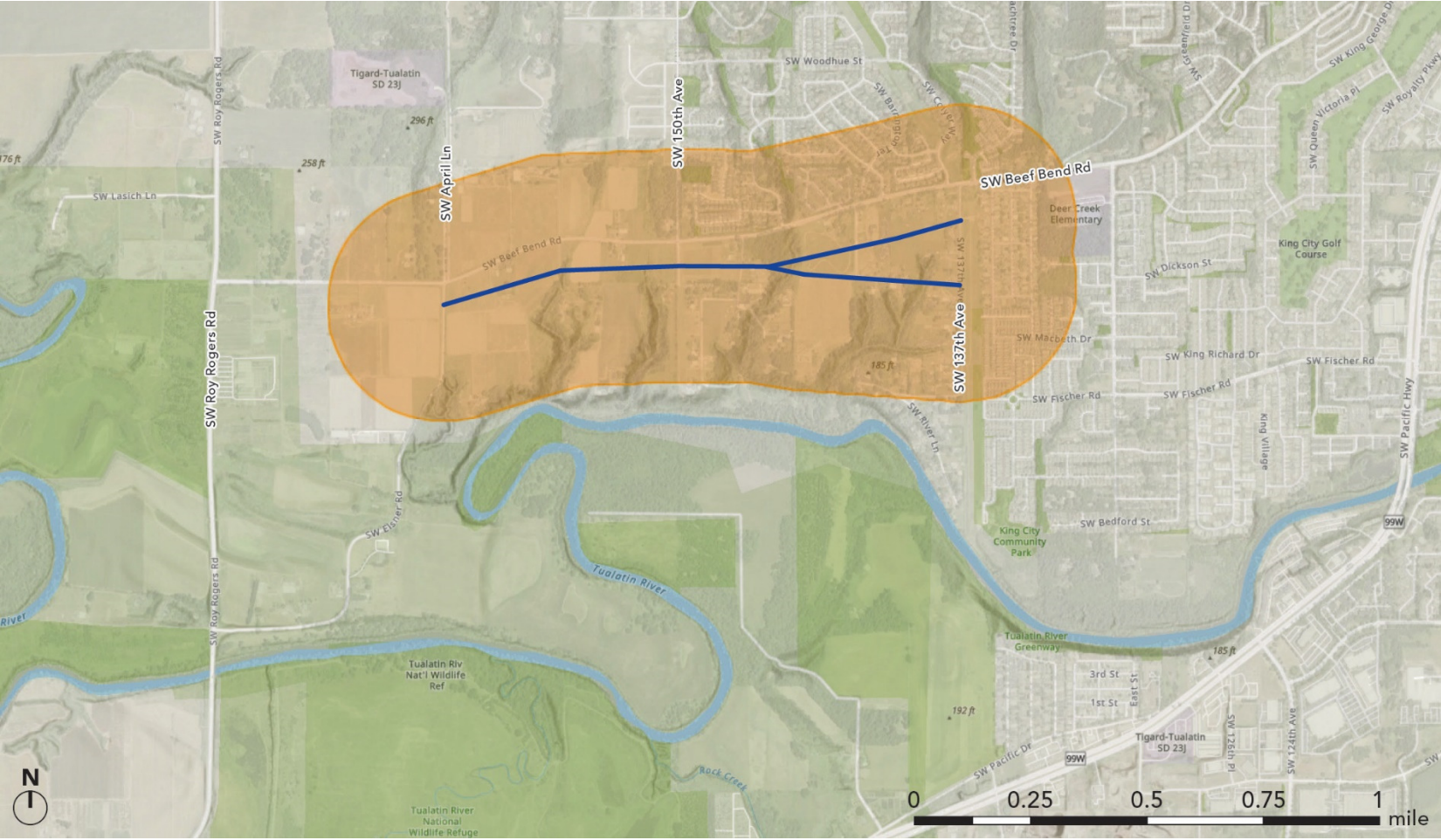
\*Households in which no one 14 and over speaks English "very well" or speaks English only.

Location: User-specified polygonal location  
 Ring (buffer): 0-miles radius  
 Description: Alternative 3 study area

	2015 - 2019 ACS Estimates	Percent	MOE (±)
<b>Population by Language Spoken at Home*</b>			
Total (persons age 5 and above)	1,622	100%	456
English	1,298	80%	431
Spanish	185	11%	247
French	14	1%	50
French Creole	N/A	N/A	N/A
Italian	N/A	N/A	N/A
Portuguese	N/A	N/A	N/A
German	20	1%	73
Yiddish	N/A	N/A	N/A
Other West Germanic	N/A	N/A	N/A
Scandinavian	N/A	N/A	N/A
Greek	N/A	N/A	N/A
Russian	N/A	N/A	N/A
Polish	N/A	N/A	N/A
Serbo-Croatian	N/A	N/A	N/A
Other Slavic	N/A	N/A	N/A
Armenian	N/A	N/A	N/A
Persian	N/A	N/A	N/A
Gujarathi	N/A	N/A	N/A
Hindi	N/A	N/A	N/A
Urdu	N/A	N/A	N/A
Other Indic	N/A	N/A	N/A
Other Indo-European	46	3%	155
Chinese	2	0%	15
Japanese	N/A	N/A	N/A
Korean	33	2%	139
Mon-Khmer, Cambodian	N/A	N/A	N/A
Hmong	N/A	N/A	N/A
Thai	N/A	N/A	N/A
Laotian	N/A	N/A	N/A
Vietnamese	7	0%	31
Other Asian	0	0%	17
Tagalog	7	0%	34
Other Pacific Island	N/A	N/A	N/A
Navajo	N/A	N/A	N/A
Other Native American	N/A	N/A	N/A
Hungarian	N/A	N/A	N/A
Arabic	0	0%	17
Hebrew	N/A	N/A	N/A
African	N/A	N/A	N/A
Other and non-specified	2	0%	15
Total Non-English	323	20%	627

**Data Note:** Detail may not sum to totals due to rounding. Hispanic population can be of any race.  
 N/A means not available. **Source:** U.S. Census Bureau, American Community Survey (ACS) 2015 - 2019.  
 \*Population by Language Spoken at Home is available at the census tract summary level and up.

Alternative 4 Alignment and ¼ Mile Buffer





Location: User-specified polygonal location  
 Ring (buffer): 0-miles radius  
 Description: Alternative 4 study area

Summary of ACS Estimates		2015 - 2019
Population		2,388
Population Density (per sq. mile)		2,167
People of Color Population		724
% People of Color Population		30%
Households		845
Housing Units		862
Housing Units Built Before 1950		38
Per Capita Income		47,352
Land Area (sq. miles) (Source: SF1)		1.10
% Land Area		100%
Water Area (sq. miles) (Source: SF1)		0.00
% Water Area		0%

	2015 - 2019 ACS Estimates	Percent	MOE (±)
<b>Population by Race</b>			
Total	2,388	100%	531
Population Reporting One Race	2,300	96%	1,195
White	1,847	77%	449
Black	108	5%	157
American Indian	26	1%	44
Asian	226	9%	286
Pacific Islander	8	0%	66
Some Other Race	84	4%	193
Population Reporting Two or More Races	87	4%	94
Total Hispanic Population	280	12%	315
Total Non-Hispanic Population	2,108		
White Alone	1,664	70%	474
Black Alone	108	5%	157
American Indian Alone	14	1%	31
Non-Hispanic Asian Alone	226	9%	286
Pacific Islander Alone	8	0%	66
Other Race Alone	0	0%	12
Two or More Races Alone	87	4%	94
<b>Population by Sex</b>			
Male	1,202	50%	337
Female	1,186	50%	308
<b>Population by Age</b>			
Age 0-4	217	9%	132
Age 0-17	641	27%	265
Age 18+	1,746	73%	435
Age 65+	328	14%	179

**Data Note:** Detail may not sum to totals due to rounding. Hispanic population can be of any race.

N/A means not available. **Source:** U.S. Census Bureau, American Community Survey (ACS) 2015 - 2019

Location: User-specified polygonal location  
 Ring (buffer): 0-miles radius  
 Description: Alternative 4 study area

	2015 - 2019 ACS Estimates	Percent	MOE (±)
<b>Population 25+ by Educational Attainment</b>			
Total	1,624	100%	404
Less than 9th Grade	22	1%	45
9th - 12th Grade, No Diploma	44	3%	66
High School Graduate	216	13%	116
Some College, No Degree	345	21%	241
Associate Degree	185	11%	162
Bachelor's Degree or more	811	50%	314
<b>Population Age 5+ Years by Ability to Speak English</b>			
Total	2,170	100%	517
Speak only English	1,732	80%	434
Non-English at Home <sup>1+2+3+4</sup>	438	20%	265
<sup>1</sup> Speak English "very well"	360	17%	215
<sup>2</sup> Speak English "well"	50	2%	104
<sup>3</sup> Speak English "not well"	18	1%	47
<sup>4</sup> Speak English "not at all"	9	0%	73
<sup>3+4</sup> Speak English "less than well"	28	1%	86
<sup>2+3+4</sup> Speak English "less than very well"	78	4%	135
<b>Linguistically Isolated Households*</b>			
Total	4	100%	30
Speak Spanish	0	0%	12
Speak Other Indo-European Languages	0	0%	12
Speak Asian-Pacific Island Languages	4	100%	27
Speak Other Languages	0	0%	12
<b>Households by Household Income</b>			
Household Income Base	845	100%	178
< \$15,000	32	4%	55
\$15,000 - \$25,000	14	2%	36
\$25,000 - \$50,000	68	8%	89
\$50,000 - \$75,000	104	12%	84
\$75,000 +	627	74%	271
<b>Occupied Housing Units by Tenure</b>			
Total	845	100%	178
Owner Occupied	723	86%	182
Renter Occupied	122	14%	79
<b>Employed Population Age 16+ Years</b>			
Total	1,828	100%	437
In Labor Force	1,280	70%	365
Civilian Unemployed in Labor Force	29	2%	65
Not In Labor Force	548	30%	248

**Data Note:** Detail may not sum to totals due to rounding. Hispanic population can be of anyrace.

N/A means not available. **Source:** U.S. Census Bureau, American Community Survey (ACS)

\*Households in which no one 14 and over speaks English "very well" or speaks English only.

Location: User-specified polygonal location  
 Ring (buffer): 0-miles radius  
 Description: Alternative 4 study area

	2015 - 2019 ACS Estimates	Percent	MOE (±)
<b>Population by Language Spoken at Home*</b>			
Total (persons age 5 and above)	N/A	N/A	N/A
English	N/A	N/A	N/A
Spanish	N/A	N/A	N/A
French	N/A	N/A	N/A
French Creole	N/A	N/A	N/A
Italian	N/A	N/A	N/A
Portuguese	N/A	N/A	N/A
German	N/A	N/A	N/A
Yiddish	N/A	N/A	N/A
Other West Germanic	N/A	N/A	N/A
Scandinavian	N/A	N/A	N/A
Greek	N/A	N/A	N/A
Russian	N/A	N/A	N/A
Polish	N/A	N/A	N/A
Serbo-Croatian	N/A	N/A	N/A
Other Slavic	N/A	N/A	N/A
Armenian	N/A	N/A	N/A
Persian	N/A	N/A	N/A
Gujarathi	N/A	N/A	N/A
Hindi	N/A	N/A	N/A
Urdu	N/A	N/A	N/A
Other Indic	N/A	N/A	N/A
Other Indo-European	N/A	N/A	N/A
Chinese	N/A	N/A	N/A
Japanese	N/A	N/A	N/A
Korean	N/A	N/A	N/A
Mon-Khmer, Cambodian	N/A	N/A	N/A
Hmong	N/A	N/A	N/A
Thai	N/A	N/A	N/A
Laotian	N/A	N/A	N/A
Vietnamese	N/A	N/A	N/A
Other Asian	N/A	N/A	N/A
Tagalog	N/A	N/A	N/A
Other Pacific Island	N/A	N/A	N/A
Navajo	N/A	N/A	N/A
Other Native American	N/A	N/A	N/A
Hungarian	N/A	N/A	N/A
Arabic	N/A	N/A	N/A
Hebrew	N/A	N/A	N/A
African	N/A	N/A	N/A
Other and non-specified	N/A	N/A	N/A
Total Non-English	N/A	N/A	N/A

**Data Note:** Detail may not sum to totals due to rounding. Hispanic population can be of any race.  
 N/A means not available. **Source:** U.S. Census Bureau, American Community Survey (ACS) 2015 - 2019.  
 \*Population by Language Spoken at Home is available at the census tract summary level and up.